



Price
£325,000

Freehold

2x  1x  1x 

**The Beeches, Harden
Road, Lydd, Romney
Marsh, Kent, TN29**

OVER 60?

Secure this property
for up to **59% less!**

Wards
Helping you move forwards



Main features

- Built as a 3 bedroom house, currently adapted to be 2
- Landscaped rear garden, overlooking open fields
- Stylish modern decoration throughout
- Large kitchen/diner
- Short walk to local shops and amenities

Accommodation

GROUND FLOOR

Entrance Hall

Kitchen/Diner: 16'2 x 8'3 (4.93m x 2.52m)

Lounge: 15'4 x 10'10 (4.68m x 3.30m)

Cloakroom

FIRST FLOOR

Landing

Bedroom 1: 10'8 x 7'11 (3.25m x 2.41m)

Bedroom 2: 11'10 x 9'5 (3.61m x 2.87m)

Bathroom

OUTSIDE

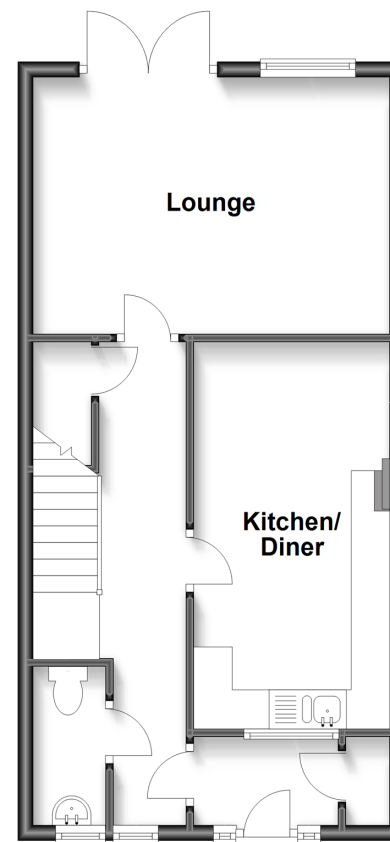
Off Road Parking

Garage

Front, Side & Rear Gardens

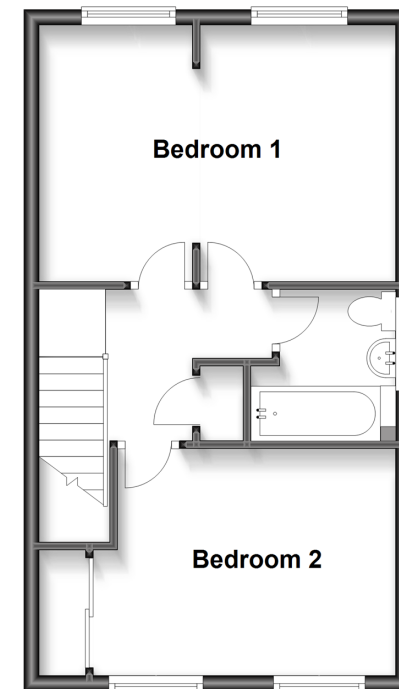
Ground Floor

Approx. 44.2 sq. metres (475.4 sq. feet)



First Floor

Approx. 38.5 sq. metres (413.9 sq. feet)



Call New Romney - 01797 363745 ■ wardsofkennt.co.uk

- Legal advice should be taken to verify fixtures/fittings, planning, alterations and/or lease details
- Appliances & services are untested, dimensions are approximate and floor plans are not to scale
- Through a Homewise Home For Life Plan people aged 60+ can secure this property for up to 59% less, by purchasing a Lifetime Lease.



13524727/20230603/TE/CA