



**Price**

**£500,000**

**Freehold**

3x  2x  1x 

**Rhee Wall Road,  
Brenzett, Romney  
Marsh, Kent, TN29**

**OVER 60?**

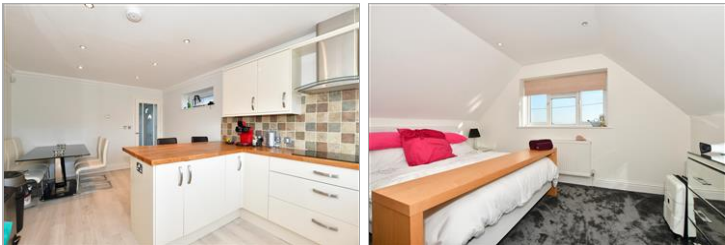
Secure this property  
for up to **59% less!**



**Video Tour available**

**Wards**  
Helping you move forwards





## Main features

- Fabulous light & airy modern home
- Semi-rural location, stunning views
- Landscaped garden, patio area with remote control awning
- Wonderful modern kitchen/diner
- Integral vacuum cleaning for the whole house, large lounge with direct access to the garden

## Accommodation

### GROUND FLOOR

Entrance Hall  
 Kitchen/Diner: 18'5 x 11'5 (5.62m x 3.48m)  
 Lounge: 16'0 x 13'1 (4.88m x 3.99m)  
 Office/Bedroom 3: 13'2 x 7'10 (4.02m x 2.39m)  
 Utility/Cloakroom: 10'5 x 7'7 (3.18m x 2.31m)

### FIRST FLOOR

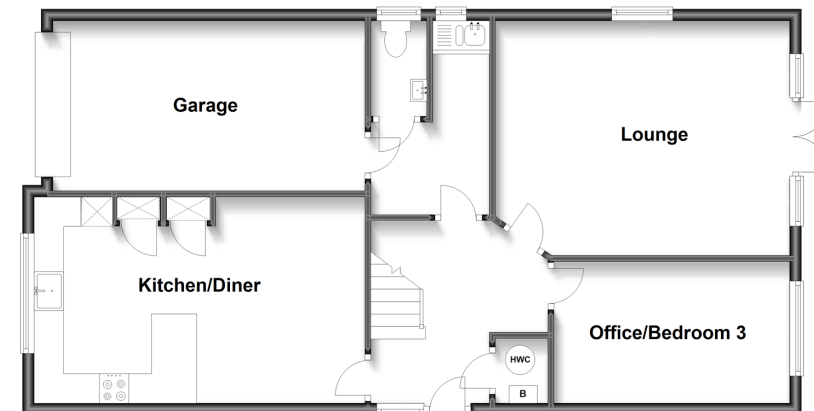
Landing  
 Bedroom 1: 17'4 x 13'7 (5.29m x 4.14m)  
 En-Suite Shower Room  
 Bedroom 2: 13'2 x 11'2 (4.02m x 3.41m)  
 Bathroom  
 Eaves

### OUTSIDE

Integral Garage  
 Off Road Parking  
 Front & Rear Gardens

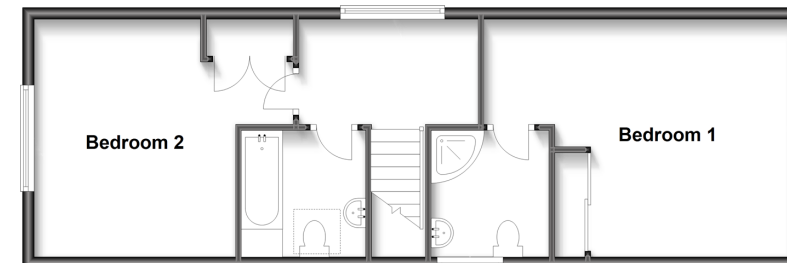
### Ground Floor

Approx. 82.4 sq. metres (886.4 sq. feet)



### First Floor

Approx. 51.8 sq. metres (557.5 sq. feet)



**Call New Romney - 01797 363745 ■ [wardsofkennt.co.uk](http://wardsofkennt.co.uk)**

- Legal advice should be taken to verify fixtures/fittings, planning, alterations and/or lease details
- Appliances & services are untested, dimensions are approximate and floor plans are not to scale
- Through a Homewise Home For Life Plan people aged 60+ can secure this property for up to 59% less, by purchasing a Lifetime Lease.



13524778/20231214/AH/CA