



**Price**  
**£390,000**

**Freehold**

4x  2x  2x 

**Channon Road,  
Greatstone, Kent, TN28**

**OVER 60?**

You could get up to  
**59% off** the price!\*

*Wards*  
Helping you move forwards





## Main features

- Much improved and extended home
- Quiet popular mews close to the beach and local primary school
- 2 bathrooms, large family room
- Garage and off road parking for several cars
- Useful outbuilding with the potential for a home office

## Accommodation

### GROUND FLOOR

#### Porch

#### Entrance Hall

**Lounge:** 12'2 x 11'9 (3.71m x 3.58m)

**Dining Area:** 13'1 x 10'7 (3.99m x 3.23m)

**Family Room:** 27'3 x 11'0 (8.31m x 3.36m)

#### Cloakroom

**Kitchen:** 12'7 x 9'1 (3.84m x 2.77m)

**Utility:** 10'7 x 9'1 (3.23m x 2.77m)

### FIRST FLOOR

#### Landing

**Bedroom 1:** 13'9 x 9'0 (4.19m x 2.75m)

**Bedroom 2:** 11'10 x 11'10 (3.61m x 3.61m)

**Bedroom 3:** 12'0 x 10'6 (3.66m x 3.20m)

**Bedroom 4:** 8'5 x 7'11 (2.57m x 2.41m)

#### Bathroom

#### Bathroom

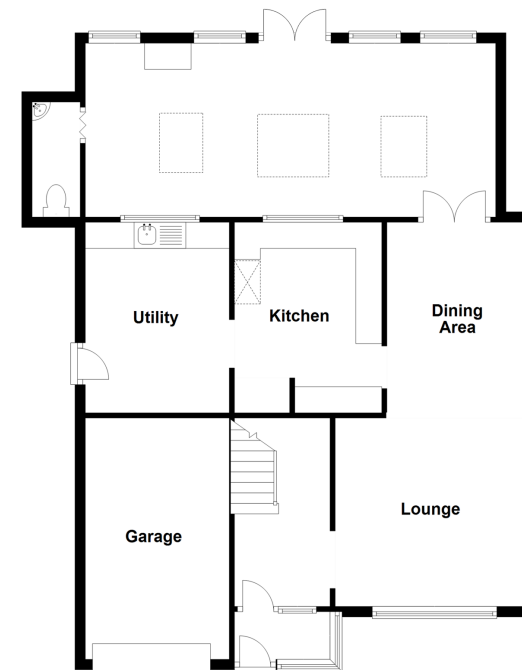
### OUTSIDE

#### Off Road Parking

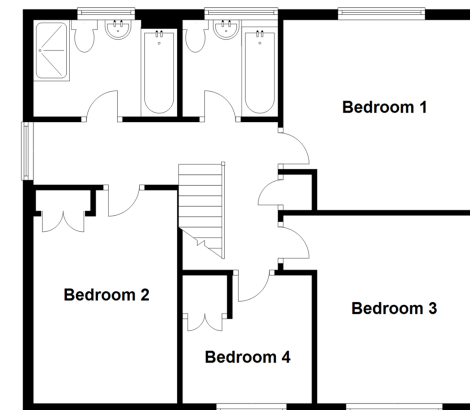
#### Garage

#### Front & Rear Gardens

**Ground Floor**  
Approx. 97.0 sq. metres (1044.4 sq. feet)

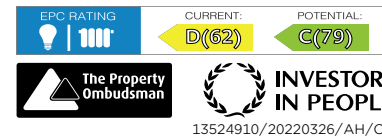


**First Floor**  
Approx. 62.9 sq. metres (676.6 sq. feet)



**Call New Romney - 01797 363745 ■ [wardsof Kent.co.uk](http://wardsof Kent.co.uk)**

- Legal advice should be taken to verify fixtures/fittings, planning, alterations and/or lease details
- Appliances & services are untested, dimensions are approximate and floor plans are not to scale
- Our Homewise partnership offer a 'Home for Life' plan to buyers over 60, granting a lifetime lease for your protection and reducing the purchase price by up to 59%



13524910/20220326/AH/CA