



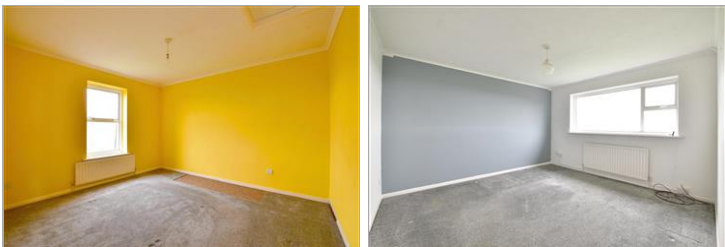
Price
£250,000

Leasehold

2x  1x  1x 

**Armada Close, Grand
Parade, Littlestone, New
Romney, Kent, TN28**

Wards
Helping you move forwards



Main features

- Fabulous purpose built 1st floor maisonette overlooking the sea
- Private rear garden
- Garage en-bloc and parking space
- No onward chain so a quick sale could be available
- Excellent location for local shops, amenities and of course the beach

Accommodation

GROUND FLOOR

Porch

Entrance Hall

FIRST FLOOR

Landing

Lounge/Bedroom 2: 12'4 x 11'8 (3.76m x 3.56m)

Kitchen/Breakfast Room: 18'2 x 8'8 (5.54m x 2.64m)

SECOND FLOOR

Landing

Lounge: 18'1 x 12'5 (5.52m x 3.79m)

Bedroom 1: 12'4 x 10'7 (3.76m x 3.23m)

Bathroom

OUTSIDE

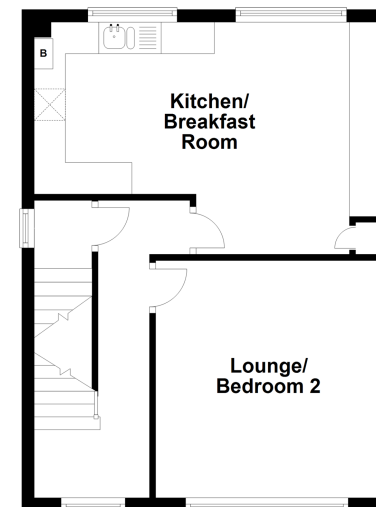
Parking Space

Garage En-Bloc

Rear Garden

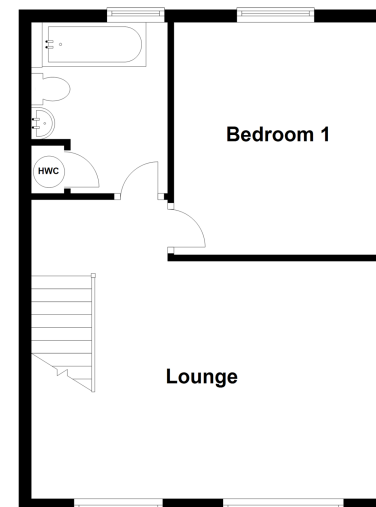
First Floor

Approx. 41.9 sq. metres (451.3 sq. feet)



Second Floor

Approx. 41.9 sq. metres (451.3 sq. feet)



Call New Romney - 01797 363745 ■ wardsforkent.co.uk

- Legal advice should be taken to verify fixtures/fittings, planning, alterations and/or lease details
- Appliances & services are untested, dimensions are approximate and floor plans are not to scale



13524985/20220520/CC/CA