



OVER 60?

You could get up to
59% off the price!*

Guide Price
£360,000

Freehold

3x  1x  1x 

**Pleasance Road North,
Lydd On Sea, Romney
Marsh, Kent, TN29**

Wards
Helping you move forwards



Main features

- Beautiful home with fabulous views to the rear
- Sunny low maintenance garden
- Double glazing and central heating
- Former garage has been split into storage area and utility room
- Just around the corner from the seafront

Accommodation

GROUND FLOOR

Entrance Hall

Kitchen: 10'3 x 9'0 (3.13m x 2.75m)

Lounge: 18'6 x 11'9 (5.64m x 3.58m)

Bedroom 1: 12'0 x 11'9 (3.66m x 3.58m)

Bedroom 2: 11'9 (3.58m) narrowing to 8'10 (2.69m) x 10'8 (3.25m)

Bedroom 3: 7'10 x 6'8 (2.39m x 2.03m)

Bathroom

OUTSIDE

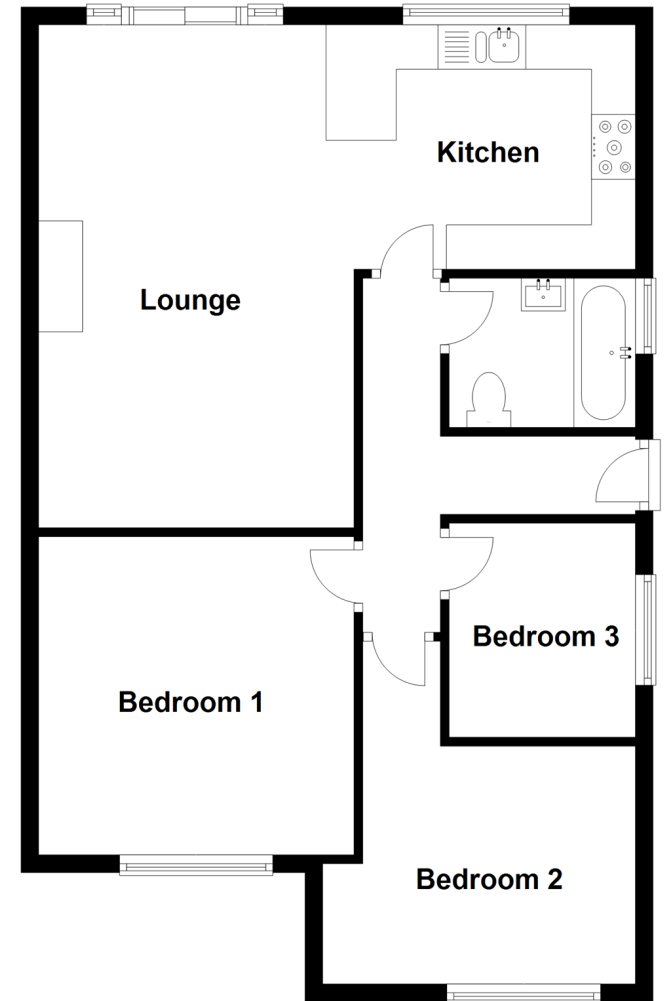
Off Road Parking

Front & Rear Garden

Storage/Utility(Former Garage)

Ground Floor

Approx. 68.6 sq. metres (738.6 sq. feet)



Call New Romney - 01797 363745 ■ wardsof Kent.co.uk

- Legal advice should be taken to verify fixtures/fittings, planning, alterations and/or lease details
- Appliances & services are untested, dimensions are approximate and floor plans are not to scale
- Our Homewise partnership offer a 'Home for Life' plan to buyers over 60, granting a lifetime lease for your protection and reducing the purchase price by up to 59%



13525026/20220704/KW/SRH