



Guide Price
£450,000

Freehold

4x  2x  1x 

**Prime View, New
Romney, Kent, TN28**

Wards
Helping you move forwards



Main features

- An exclusive collection of brand new contemporary houses part of the Prime View development
- Set in the idyllic and desirable location of Littlestone, New Romney
- Each home offers spacious living accommodation, stunning kitchens and beautifully appointed bathrooms
- 10 year build warranty

Accommodation

GROUND FLOOR

Entrance Hall

Cloakroom

Family Room: 15'5 x 9'10 (4.70m x 3.00m)

FIRST FLOOR

Landing

Kitchen/Living Room: 15'6 x 10'3 (4.73m x 3.13m)

Bathroom

Bedroom 3: 10'4 x 9'11 (3.15m x 3.02m)

Bedroom 4: 10'3 x 9'9 (3.13m x 2.97m)

SECOND FLOOR

Landing

Bedroom 1: 15'5 x 12'9 (4.70m x 3.89m)

En-Suite Shower Room

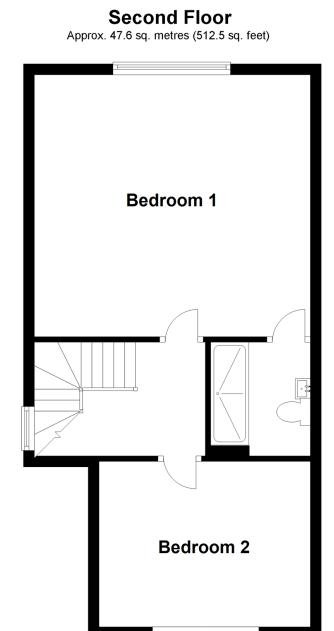
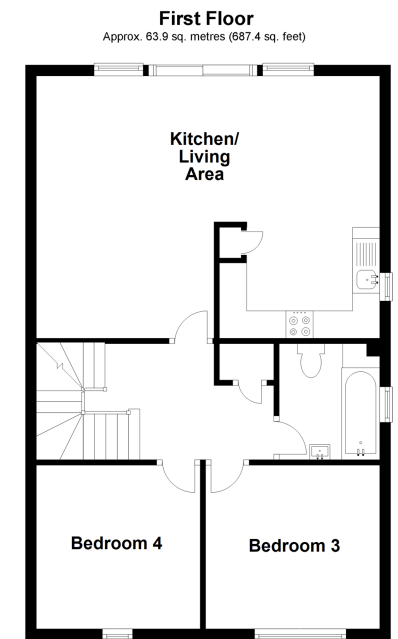
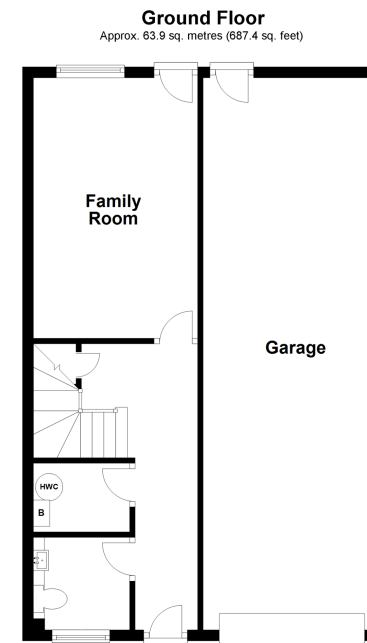
Bedroom 2: 12'8 x 10'3 (3.86m x 3.13m)

OUTSIDE

Off Road Parking

Integral Garage

Rear Garden



Call New Romney - 01797 363745 ■ wardsforkent.co.uk

- Legal advice should be taken to verify fixtures/fittings, planning, alterations and/or lease details
- Appliances & services are untested, dimensions are approximate and floor plans are not to scale



13525039/20220506/AH/SRH