



Price
£375,000

Freehold

3x  1x  1x 

**The Fairway,
Dymchurch, Romney
Marsh, Kent, TN29**

OVER 60?

Secure this property
for up to **59% less!**

Wards
Helping you move forwards



Main features

- Lovely home with garage and pretty established garden to relax in
- Large conservatory to unwind or entertain in
- Sought after location handy for the beach
- Bus stop around the corner
- Double glazing and central heating

Accommodation

GROUND FLOOR

Porch

Entrance Hall

Shower Room

Kitchen: 10'11 x 10'1 (3.33m x 3.08m)

Lounge: 17'7 x 12'1 (5.36m x 3.69m)

Inner Hall

Bedroom 1: 13'1 x 8'3 (3.99m x 2.52m)

Bedroom 2: 12'7 x 7'11 (3.84m x 2.41m)

Bedroom 3: 8'4 x 6'6 (2.54m x 1.98m)

OUTSIDE

Off Road Parking

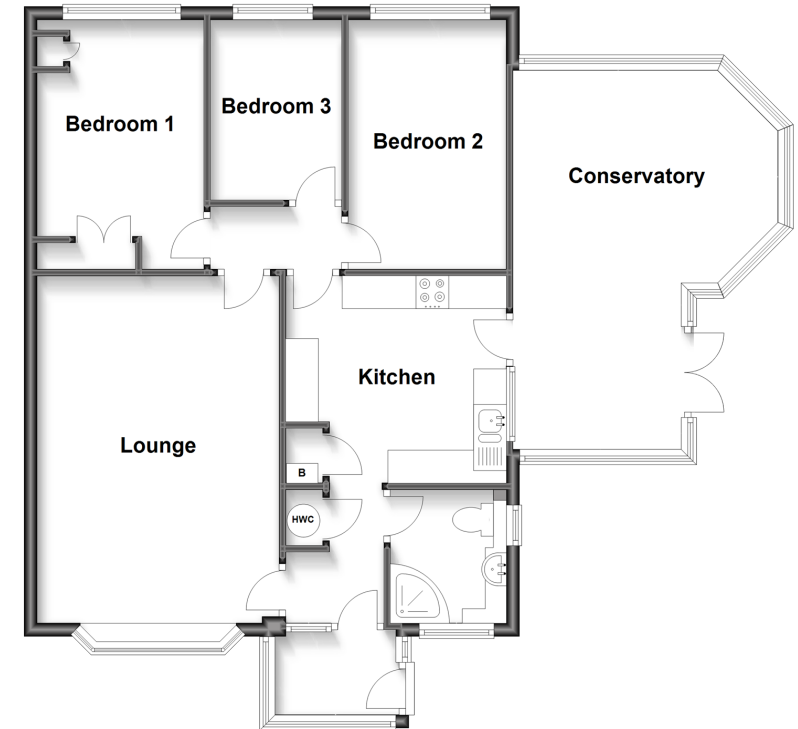
Garage

Front & Rear Gardens

Outbuilding

Ground Floor

Approx. 87.4 sq. metres (940.6 sq. feet)



Call New Romney - 01797 363745 ■ wardsofkennt.co.uk

- Legal advice should be taken to verify fixtures/fittings, planning, alterations and/or lease details
- Appliances & services are untested, dimensions are approximate and floor plans are not to scale
- Through a Homewise Home For Life Plan people aged 60+ can secure this property for up to 59% less, by purchasing a Lifetime Lease.



13525057/20230408/AH/SRH