



**OVER 60?**

Secure this property  
for up to **59% less!**

**Price**

**£305,000**

**Freehold**

2x  1x  1x 

Laurel Avenue, St. Marys Bay, Kent, TN29

*Wards*  
Helping you move forwards





## Main features

- Lovely home in the sought after village of St Marys Bay
- Handy for the seafront and open countryside
- Conservatory and summer house from which to admire the garden
- Beautiful garden to relax in and enjoy the sun
- Short drive to Dymchurch

## Accommodation

### GROUND FLOOR

Entrance Hall

Kitchen: 11'6 x 8'0 (3.51m x 2.44m)

Lounge: 18'10 (5.74m) x 13'9 (4.19m)  
narrowing to 11'7 (3.53m)

Bedroom 1: 12'5 x 8'3 (3.79m x 2.52m)

Bedroom 2: 8'9 x 8'2 (2.67m x 2.49m)

Conservatory: 7'7 x 5'10 (2.31m x 1.78m)

Shower Room

### OUTSIDE

Driveway

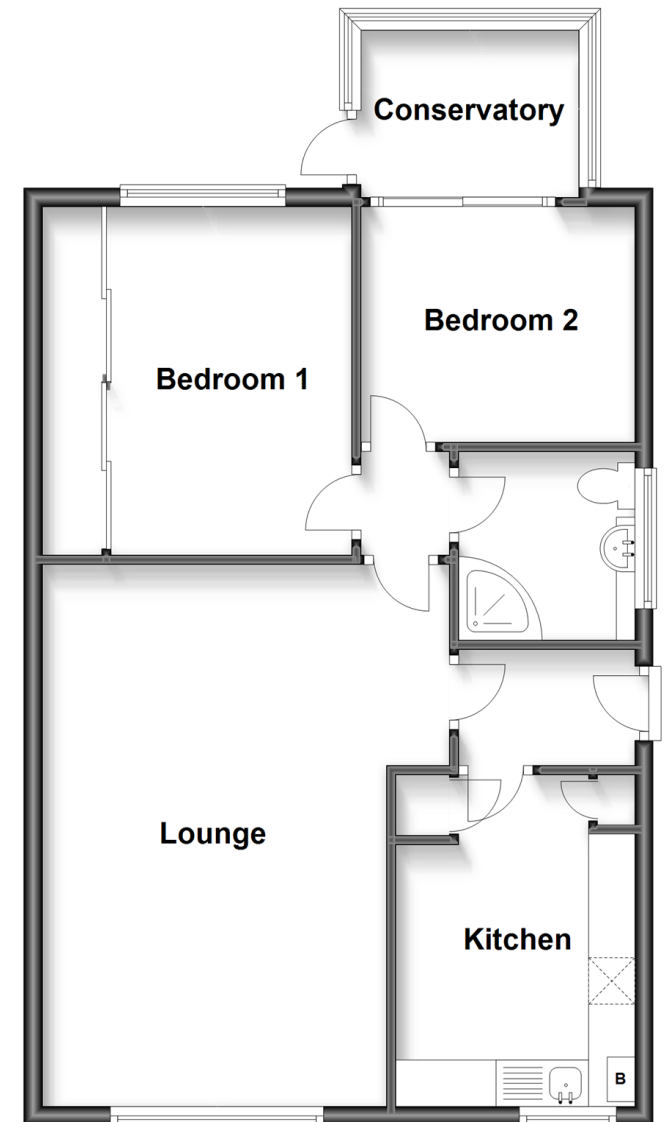
Garage

Front & Rear Gardens

Summer House

## Ground Floor

Approx. 716.0 sq. feet



**Call New Romney - 01797 363745 ■ [wardsofkennt.co.uk](http://wardsofkennt.co.uk)**

- Legal advice should be taken to verify fixtures/fittings, planning, alterations and/or lease details
- Appliances & services are untested, dimensions are approximate and floor plans are not to scale
- Through a Homewise Home For Life Plan people aged 60+ can secure this property for up to 59% less, by purchasing a Lifetime Lease.



13525059/20230517/RB/SRH