



Price
£365,000

Leasehold

1x  1x  1x 

**Victory Place, Nelson
Mews, Littlestone, New
Romney, Kent, TN28**

OVER 60?

Secure this property
for up to **59% less!**

Wards
Helping you move forwards



Main features

- Exceptional high-end apartment
- Unspoilt sea views
- Undercroft garage complex with all facilities with electric gated entrance
- Bike store and bin store
- Stylish decoration throughout, desirable location

Accommodation

FIRST FLOOR

Entrance Hall

Lounge/Kitchen: 30'2 (9.20m) x 16'4 (4.98m) narrowing to 12'7 (3.84m)

Balcony

Bedroom: 20'2 at widest point x 12'6 (6.15m x 3.81m)

Jack & Jill Shower Room

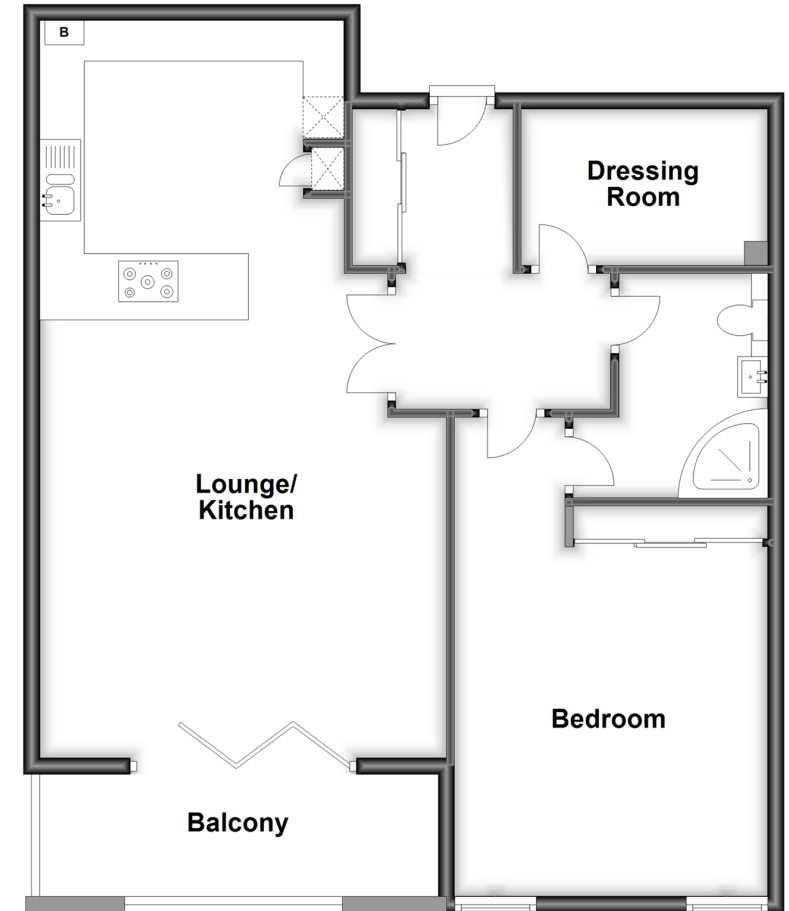
Dressing Room: 9'8 x 6'2 (2.95m x 1.88m)

OUTSIDE

Undercroft Parking

First Floor

Approx. 81.8 sq. metres (880.6 sq. feet)



Call New Romney - 01797 363745 ■ wardsofkennt.co.uk

- Legal advice should be taken to verify fixtures/fittings, planning, alterations and/or lease details
- Appliances & services are untested, dimensions are approximate and floor plans are not to scale
- Through a Homewise Home For Life Plan people aged 60+ can secure this property for up to 59% less, by purchasing a Lifetime Lease.



13525087/20230116/JH/CA