



**Guide Price**  
**£425,000**

**Freehold**

4x  2x  1x 

**River Mews, Newchurch,  
Romney Marsh, Kent,  
TN29**

**OVER 60?**

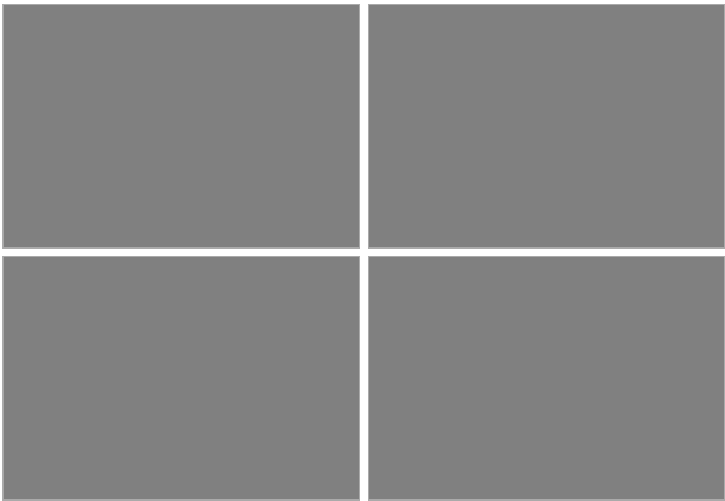
Secure this property  
for up to **59% less!**



**Video Tour available**

*Wards*  
Helping you move forwards





## Main features

- Beautiful family home with gorgeous views of the Kent countryside to front and rear
- Garage and off road parking, short drive to New Romney town centre
- Low maintenance sunny garden
- Remainder of new build guarantee
- En-suite shower room to bedroom 1

## Accommodation

### GROUND FLOOR

Entrance Hall

Lounge: 16'4 x 14'8 (4.98m x 4.47m)

Kitchen: 10'6 x 9'3 (3.20m x 2.82m)

Cloakroom

### FIRST FLOOR

Landing

Bedroom 1: 14'1 x 10'4 (4.30m x 3.15m)

En-Suite Shower Room

Bedroom 2: 11'8 x 9'7 (3.56m x 2.92m)

Bedroom 3: 10'6 x 9'1 (3.20m x 2.77m)

Bedroom 4: 9'7 x 5'8 (2.92m x 1.73m)

Bathroom

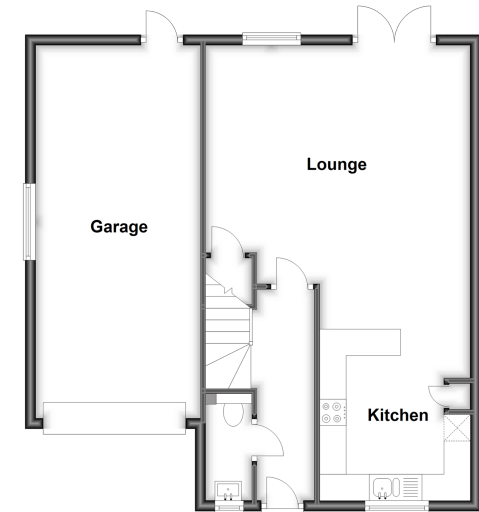
### OUTSIDE

Off Road Parking

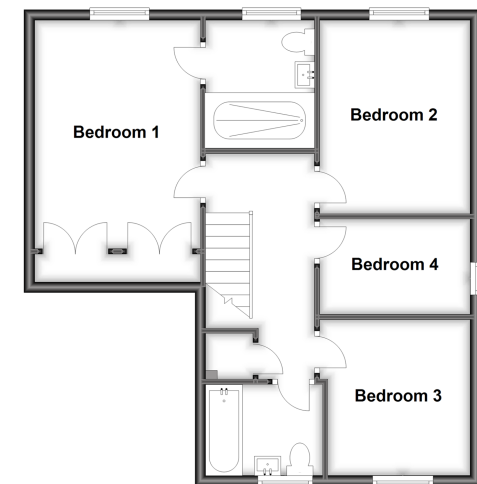
Garage

Front & Rear Gardens

**Ground Floor**  
Approx. 66.2 sq. metres (712.0 sq. feet)



**First Floor**  
Approx. 59.8 sq. metres (644.2 sq. feet)



**Call New Romney - 01797 363745 ■ [wardsof Kent.co.uk](http://wardsof Kent.co.uk)**

- Legal advice should be taken to verify fixtures/fittings, planning, alterations and/or lease details
- Appliances & services are untested, dimensions are approximate and floor plans are not to scale
- Through a Homewise Home For Life Plan people aged 60+ can secure this property for up to 59% less, by purchasing a Lifetime Lease.



13525091/20230605/SP/JH