



Price
£695,000

Freehold

3x  2x  2x 

**Madeira Road,
Littlestone, New
Romney, Kent, TN28**

Wards
Helping you move forwards



Main features

- Absolutely spectacular high-end home
- Views of the sea and the golf course
- Every small detail has been thought of and executed brilliantly
- Luxury living spaces to include stunning kitchens and bathrooms
- Landscaped and planted gardens for stress free living

Accommodation

GROUND FLOOR

Entrance Hall
 Bathroom
 Bedroom 3: 17'9 maximum x 10'4 maximum (5.41m x 3.15m)
 Utility: 9'8 x 6'4 (2.95m x 1.93m)
 Sitting Room: 21'9 x 12'2 (6.63m x 3.71m)

FIRST FLOOR

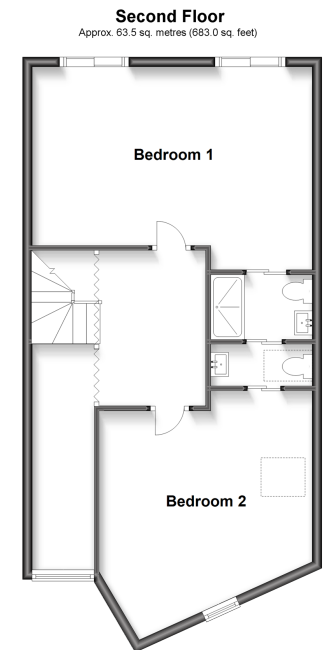
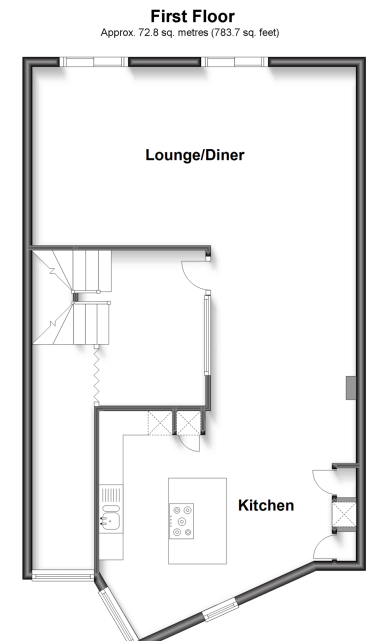
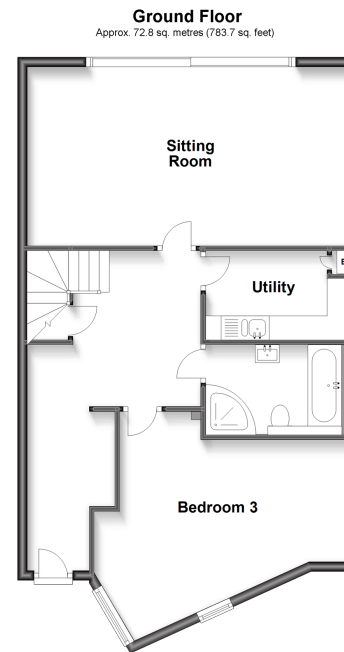
Landing
 Lounge: (L-shaped) 22'1 x 12'3 (6.74m x 3.74m) plus 9'9 x 9'8 (2.97m x 2.95m)
 Kitchen : 17'2 maximum x 13'2 maximum (5.24m x 4.02m)

SECOND FLOOR

Landing
 Bedroom 1: 17'4 x 12'4 (5.29m x 3.76m)
 Jack & Jill Shower Room
 Cloakroom
 Bedroom 2: 14'4 x 13'1 (4.37m x 3.99m)

OUTSIDE

Off Road Parking
 Front & Rear Gardens



Call New Romney - 01797 363745 ■ wardsof Kent.co.uk

- If buying to let, the energy rating will need to be improved to at least 'E' rating before you can let the property
- Legal advice should be taken to verify fixtures/fittings, planning, alterations and/or lease details
- Appliances & services are untested, dimensions are approximate and floor plans are not to scale



13525160/20231003/IW/CA