



Price

£270,000

Freehold

3x  1x  1x 

**Copperfields, Lydd,
Romney Marsh, Kent,
TN29**

OVER 60?

Secure this property
for up to **59% less!**



Video Tour available

Wards
Helping you move forwards



Main features

- **Fantastic home in a quiet mews**
- **Views of open countryside and the church**
- **Walking distance to the town centre**
- **Primary school nearby and short drive to secondary school**
- **Short drive to local beach and watersports centre**

Accommodation

GROUND FLOOR

Entrance Hall

Lounge: 16'9 x 10'9 (5.11m x 3.28m)

Kitchen: 9'3 x 8'9 (2.82m x 2.67m)

Utility: 9'4 x 6'6 (2.85m x 1.98m)

FIRST FLOOR

Landing

Bedroom 1: 12'2 x 9'9 (3.71m x 2.97m)

Bedroom 2: 9'3 x 9'2 (2.82m x 2.80m)

Bedroom 3: 8'1 x 6'7 (2.47m x 2.01m)

Bathroom

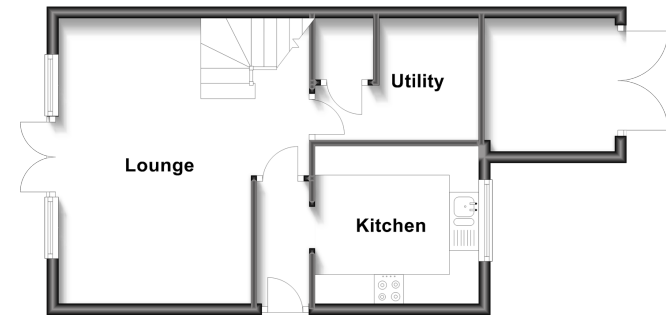
OUTSIDE

Off Road Parking

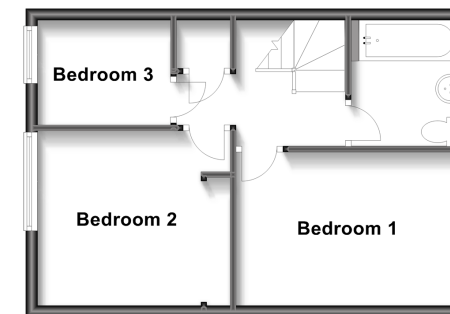
Store

Front & Rear Gardens

Ground Floor
Approx. 40.5 sq. metres (436.1 sq. feet)



First Floor
Approx. 35.2 sq. metres (378.8 sq. feet)



Call New Romney - 01797 363745 ■ wardsokent.co.uk

■ Legal advice should be taken to verify fixtures/fittings, planning, alterations and/or lease details
 ■ Through a Homewise Home For Life Plan people aged 60+ can secure this property for up to 59% less, by purchasing a Lifetime Lease.

■ Appliances & services are untested, dimensions are approximate and floor plans are not to scale