

**Price**

**£550,000**

**Freehold**

5x  3x  3x 

**King Street, Brenzett,  
Kent, TN29**

**OVER 60?**

Secure this property  
for up to **59% less!**

*Wards*  
Helping you move forwards



## Main features

- **Exceptional family home**
- **Quiet tucked away location**
- **Short drive to excellent road links to the south coast**
- **Substantial quadruple garage/workshop and long sweeping gated gravel driveway**
- **Study with potential for home office, snug for children's games machines**

## Accommodation

### GROUND FLOOR

Entrance Hall  
 Study: 10'7 x 7'9 (3.23m x 2.36m)  
 Cloakroom  
 Kitchen: 24'5 x 13'4 (7.45m x 4.07m)  
 Utility Room: 9'4 x 9'2 (2.85m x 2.80m)  
 Lounge: 18'2 x 13'7 (5.54m x 4.14m)  
 Snug: 13'6 x 13'2 into bay (4.12m x 4.02m)

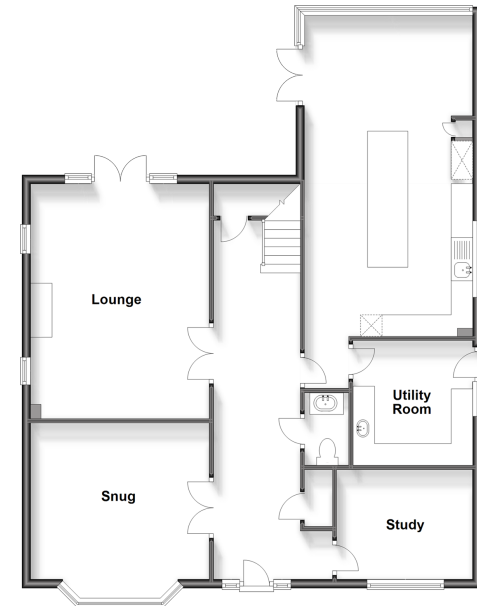
### FIRST FLOOR

Galleried Landing  
 Bedroom 1: 13'8 x 11'8 (4.17m x 3.56m)  
 En-Suite Shower Room  
 Bedroom 2: 13'9 x 10'3 (4.19m x 3.13m)  
 En-Suite Shower Room  
 Bedroom 3: 17'4 x 13'2 (5.29m x 4.02m)  
 Bedroom 4: 10'6 x 10'3 (3.20m x 3.13m)  
 Bedroom 5: 12'3 into fitted wardrobes x 7'0 (3.74m x 2.14m)  
 Bathroom

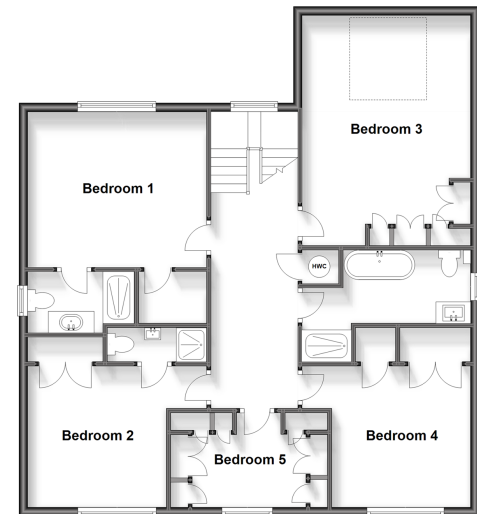
### OUTSIDE

Gated Driveway  
 Quadruple Garage/Workshop: 31'5 x 19'1 (9.58m x 5.82m)  
 Front & Rear Gardens

**Ground Floor**  
 Approx. 109.7 sq. metres (1180.6 sq. feet)



**First Floor**  
 Approx. 102.8 sq. metres (1106.7 sq. feet)



**Call New Romney - 01797 363745 ■ [wardsof Kent.co.uk](http://wardsof Kent.co.uk)**

- Legal advice should be taken to verify fixtures/fittings, planning, alterations and/or lease details
- Appliances & services are untested, dimensions are approximate and floor plans are not to scale
- Through a Homewise Home For Life Plan people aged 60+ can secure this property for up to 59% less, by purchasing a Lifetime Lease.



13525185/20230928/AH/CA