



**Price**

**£250,000**

**Leasehold**

2x  1x  1x 

**High Street, Dymchurch,  
Kent, TN29**

*Wards*  
Helping you move forwards





## Main features

- Stunning new build apartment in The Sands development
- Fully fitted kitchen with integrated appliances
- White sanitary ware with contemporary matt black fittings
- Ideally located in the town centre for amenities
- Balcony off living room

## Accommodation

### FIRST FLOOR

Hall

Kitchen/Living/Dining Room: 14'6 x 14'6 (4.42m x 4.42m)

Balcony

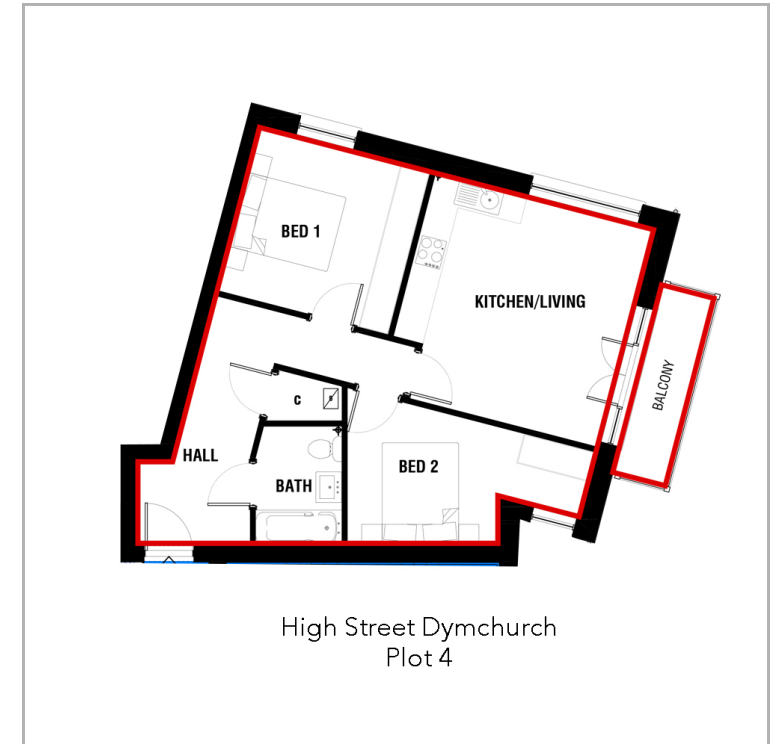
Bedroom 1: 11'5 x 11'0 (3.48m x 3.36m)

Bedroom 2: 16'6 x 4'5 (5.03m x 1.35m)

Bathroom: 7'7 x 5'6 (2.31m x 1.68m)

### OUTSIDE

Allocated Parking



**Call New Romney - 01797 363745 ■ [wardsofkent.co.uk](http://wardsofkent.co.uk)**

- If buying to let, the energy rating will need to be improved to at least 'E' rating before you can let the property
- Legal advice should be taken to verify fixtures/fittings, planning, alterations and/or lease details
- Appliances & services are untested, dimensions are approximate and floor plans are not to scale



13525188/20230605/AH/SRH