



OVER 60?

Secure this property
for up to **59% less!**

Price

£310,000

Freehold

2x  1x  1x 

**Megan Close, Lydd,
Kent, TN29**

Wards
Helping you move forwards



Main features

- Stunning modern home with private driveway and garage
- Abutting open countryside with a watercourse on the boundary
- Fabulous views across fields
- Stylish decoration throughout
- Quiet mews close to shops and town centre with excellent shops, restaurants, tea rooms etc

Accommodation

GROUND FLOOR

Entrance Hall
Cloakroom
Lounge: 17'8 (5.39m) x 10'2 (3.10m) narrowing to 6'1 (1.86m)
Kitchen/Diner: 13'5 x 10'8 (4.09m x 3.25m)
Conservatory: 10'4 x 8'1 (3.15m x 2.47m)

FIRST FLOOR

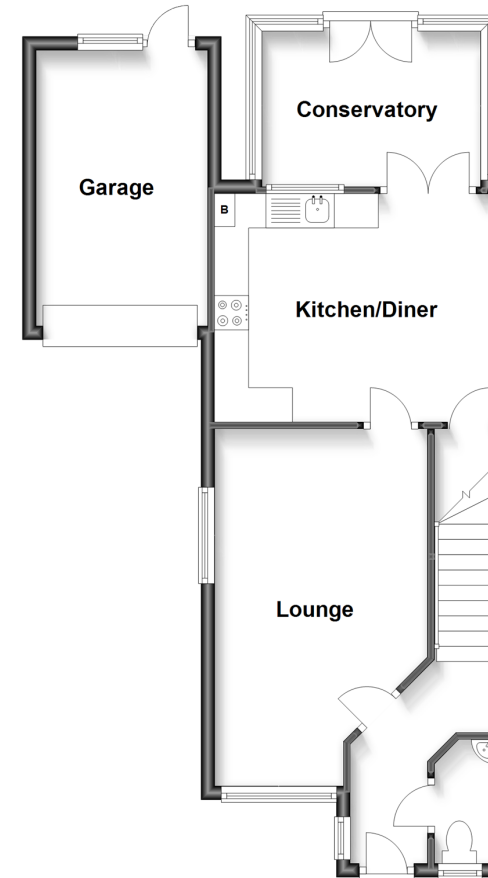
Landing
Bedroom 1: 13'5 into fitted wardrobe x 12'6 (4.09m x 3.81m)
Bedroom 2: 11'4 up to fitted wardrobes x 9'3 (3.46m x 2.82m)
Shower Room

OUTSIDE

Driveway
Garage
Front & Rear Gardens

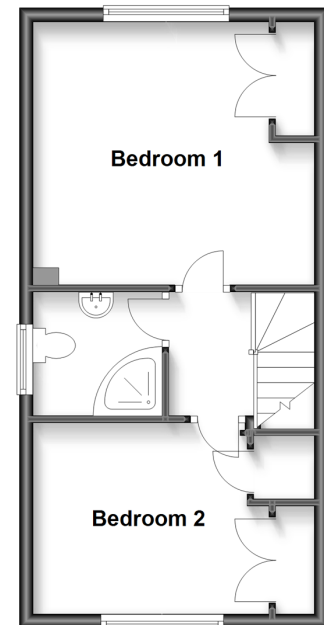
Ground Floor

Approx. 55.6 sq. metres (598.2 sq. feet)



First Floor

Approx. 35.2 sq. metres (378.8 sq. feet)



Call New Romney - 01797 363745 ■ wardsof Kent.co.uk

- Legal advice should be taken to verify fixtures/fittings, planning, alterations and/or lease details
- Appliances & services are untested, dimensions are approximate and floor plans are not to scale
- Through a Homewise Home For Life Plan people aged 60+ can secure this property for up to 59% less, by purchasing a Lifetime Lease.



13525200/20230214/AH/CA