



Guide Price
£210,000

Leasehold

3x  1x  1x 

**Sussex Road, New
Romney, Kent, TN28**

OVER 60?

Secure this property
for up to **59% less!**



Video Tour available

Wards
Helping you move forwards



Main features

- Surprisingly spacious 1st and 2nd floor maisonette with lots of character and charm
- Freehold included in the sale, £500 ground rent per year from flat no.1
- Close to town and countryside
- Allocated parking
- Flexible layout ideal for home working, large double bedrooms

Accommodation

FIRST FLOOR

Entrance Hall

Lounge: 13'0 x 11'11 (3.97m x 3.63m)

Kitchen: 13'4 x 12'0 (4.07m x 3.66m)

Shower Room

Bedroom 1: 13'0 x 12'3 (3.97m x 3.74m)

Bedroom 2: 11'11 (3.63m) narrowing to 10'9 (3.28m) x 10'2 (3.10m)

SECOND FLOOR

Landing

Bedroom 3: 23'4 x 14'11 (7.12m x 4.55m)

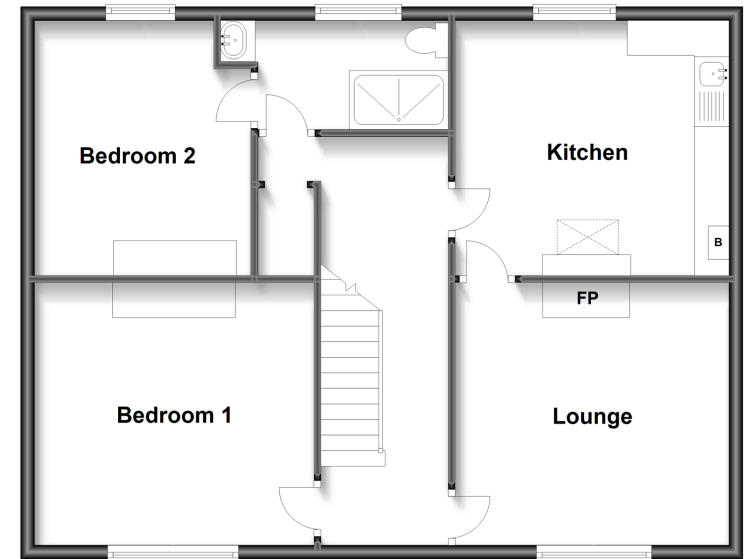
OUTSIDE

Front Garden

Allocated Parking

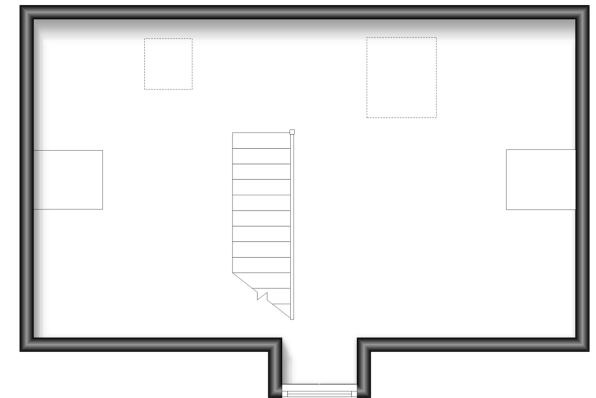
First Floor

Approx. 75.3 sq. metres (810.1 sq. feet)



Second Floor

Approx. 36.5 sq. metres (392.6 sq. feet)



Call New Romney - 01797 363745 ■ wardsofkent.co.uk

- Legal advice should be taken to verify fixtures/fittings, planning, alterations and/or lease details
- Appliances & services are untested, dimensions are approximate and floor plans are not to scale
- Through a Homewise Home For Life Plan people aged 60+ can secure this property for up to 59% less, by purchasing a Lifetime Lease.



13525220/20230315/SRH/SRH