



Price
£225,000

Leasehold

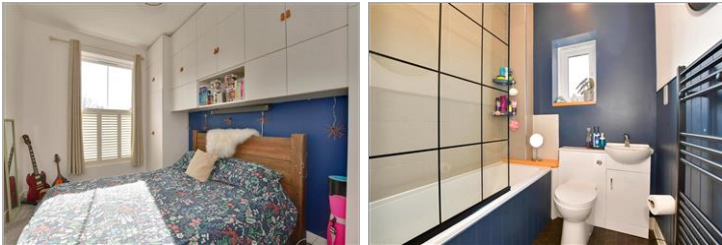
2x  1x  1x 

**Manor Road, Lydd,
Romney Marsh, Kent,
TN29**

OVER 60?

Secure this property
for up to **59% less!**

Wards
Helping you move forwards



Main features

- Modern ground floor apartment
- Stylish decoration throughout
- Allocated parking and bike store
- Much improved and ready to move into, over 900 years left on the lease
- Close to open countryside for long walks and the beach at Dungeness

Accommodation

GROUND FLOOR

Entrance Hall

Kitchen: 12'4 x 9'5 (3.76m x 2.87m)

Lounge: 18'6 x 9'6 (5.64m x 2.90m)

Bedroom 1: 13'9 x 9'11 (4.19m x 3.02m)

Bedroom 2: 13'7 x 8'9 (4.14m x 2.67m)

Bathroom

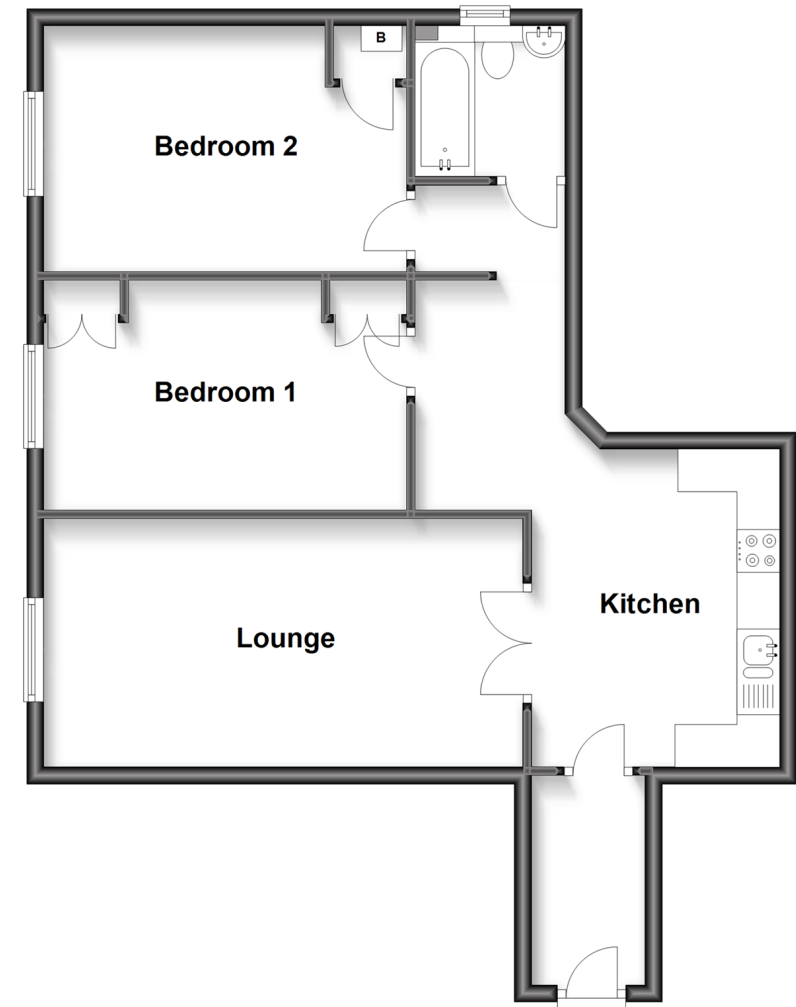
OUTSIDE

Allocated Parking

Bike Store

Ground Floor

Approx. 65.8 sq. metres (708.4 sq. feet)



Call New Romney - 01797 363745 ■ wardsofkent.co.uk

- Legal advice should be taken to verify fixtures/fittings, planning, alterations and/or lease details
- Appliances & services are untested, dimensions are approximate and floor plans are not to scale
- Through a Homewise Home For Life Plan people aged 60+ can secure this property for up to 59% less, by purchasing a Lifetime Lease.



13525258/20230401/AH/CA