



Guide Price
£680,000

Freehold

4x  2x  1x 

**School Road, St. Mary In
The Marsh, Romney
Marsh, Kent, TN29**

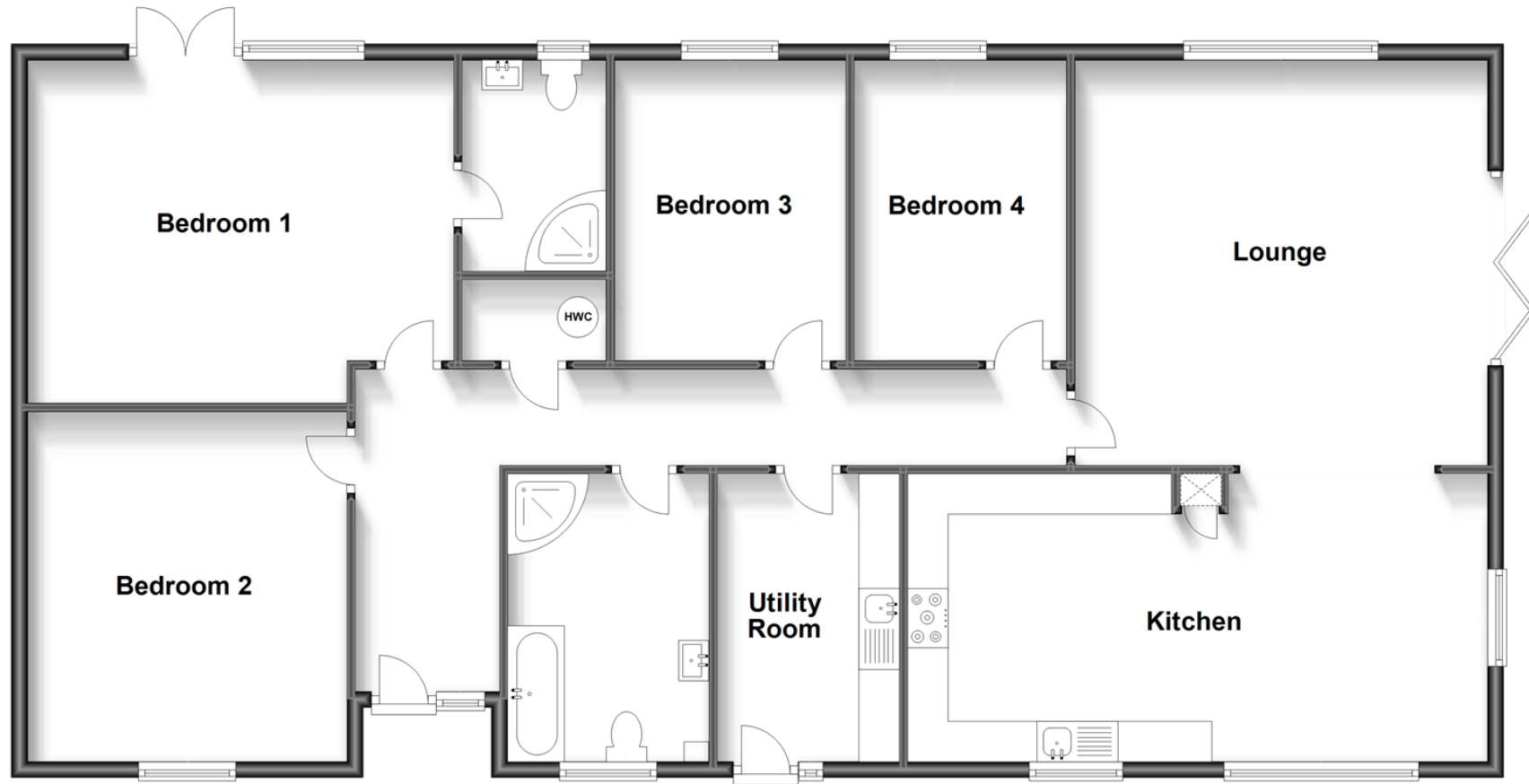
OVER 60?

Secure this property
for up to **59% less!**

Wards
Helping you move forwards

Ground Floor

Approx. 154.3 sq. metres (1660.9 sq. feet)



Accommodation

GROUND FLOOR

Entrance Hall

Lounge: 16'9 x 16'5 (5.11m x 5.01m)

Kitchen: 23'5 x 11'9 (7.14m x 3.58m)

Utility Room: 11'11 x 7'4 (3.63m x 2.24m)

Bedroom 1: 17'0 x 13'11 (5.19m x 4.24m)

En-Suite Shower Room

Bedroom 2: 14'2 x 12'10 (4.32m x 3.91m)

Bedroom 3: 12'2 x 9'6 (3.71m x 2.90m)

Bedroom 4: 12'2 x 8'8 (3.71m x 2.64m)

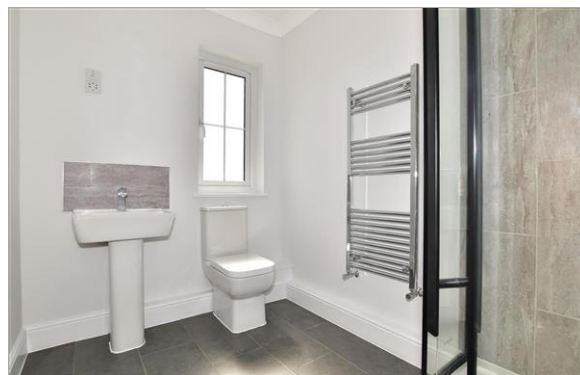
Bathroom

OUTSIDE

Off Road Parking

Car Barn

Front & Rear Gardens



Main features

- **Exceptional individual barn with stunning far reaching views**
- **High-end fixtures and quality decoration**
- **Rural location a short drive from New Romney town centre**
- **Plenty of space for a growing or extended family to enjoy all year round**
- **No onward chain and priced for a quick sale**



Nearest Schools

Primary Schools: St Nicholas C of E (Controlled) Primary 1.6 miles, Dymchurch Primary 2.6 miles

Secondary Schools: Marsh Academy 1.7 miles, Brockhill Park Performing Arts College 7.2 miles



Transport Information

Train Stations: Ham Street 5.4 miles, Appledore 5.7 miles



Address

School Road, St. Mary In The Marsh, Romney Marsh, Kent, TN29



Directions

For directions to this property please contact us.



Call New Romney Branch 01797 363745 ■ wardsofkent.co.uk



- If buying to let, the energy rating will need to be improved to at least 'E' rating before you can let the property
- Appliances & services are untested, dimensions are approximate and floor plans are not to scale

- Legal advice should be taken to verify fixtures/fittings, planning, alterations and/or lease details
- Through a Homewise Home For Life Plan people aged 60+ can secure this property for up to 59% less, by purchasing a Lifetime Lease.

13525285/20230621/CA/CA