



**Price**  
**£275,000**

**Freehold**

3x  1x  1x 

**Rype Close, Lydd, Kent,  
TN29**

**OVER 60?**

Secure this property  
for up to **59% less!**

*Wards*  
Helping you move forwards





## Main features

- Spacious home in a mews close to the High Street
- Quiet yet convenient location for shops and amenities
- Bright and airy accommodation
- Home office studio
- Mature well stocked rear garden

## Accommodation

### GROUND FLOOR

Entrance Hall

Lounge: 17'5 x 11'5 (5.31m x 3.48m)

Kitchen: 17'8 x 7'8 (5.39m x 2.34m)

### FIRST FLOOR

Landing

Bedroom 1: 11'8 x 11'2 (3.56m x 3.41m)

Bedroom 2: 11'2 x 7'11 (3.41m x 2.41m)

Bedroom 3: 11'7 x 6'1 (3.53m x 1.86m)

Bathroom

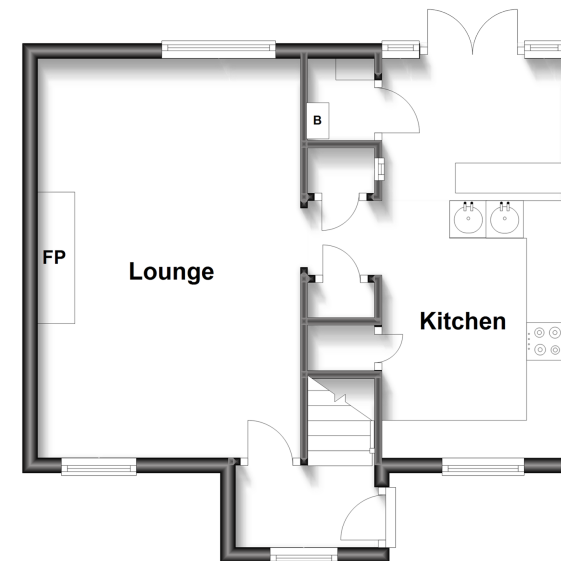
### OUTSIDE

Rear Garden

Studio

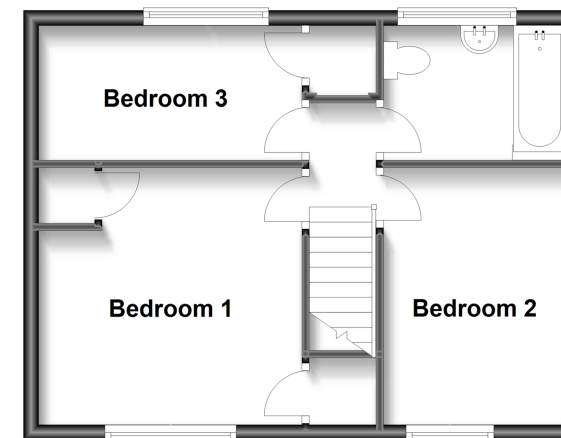
### Ground Floor

Approx. 39.5 sq. metres (425.6 sq. feet)



### First Floor

Approx. 37.4 sq. metres (402.6 sq. feet)



**Call New Romney - 01797 363745 ■ [wardsof Kent.co.uk](http://wardsof Kent.co.uk)**

- Legal advice should be taken to verify fixtures/fittings, planning, alterations and/or lease details
- Appliances & services are untested, dimensions are approximate and floor plans are not to scale
- Through a Homewise Home For Life Plan people aged 60+ can secure this property for up to 59% less, by purchasing a Lifetime Lease.



13525291/20230610/AH/CA