



Guide Price
£300,000

Freehold

2x  2x  2x 

**Taylor's Lane, St. Mary's
Bay, Kent, TN29**

OVER 60?

Secure this property
for up to **59% less!**

Wards
Helping you move forwards



Main features

- Unique home just off the seafront with lots of character
- Potential to put your own stamp on and create the home of your dreams
- Established gardens to relax or entertain in
- Garage and plenty of parking
- No onward chain

Accommodation

GROUND FLOOR

Entrance Hall

Lounge: 18'1 x 12'7 (5.52m x 3.84m)

Bedroom 2: 12'2 x 12'0 (3.71m x 3.66m)

Inner Hallway

Kitchen: 9'1 x 7'5 (2.77m x 2.26m) plus 12'9 x 6'11 (3.89m x 2.11m)

Bathroom

Bedroom 1: 12'7 x 9'9 (3.84m x 2.97m)

En-Suite Shower Room: 10'2 x 5'2 (3.10m x 1.58m)

Dining Area: 9'3 x 9'0 (2.82m x 2.75m)

Study: 7'1 x 5'2 (2.16m x 1.58m)

Conservatory: 13'1 x 10'7 (3.99m x 3.23m)

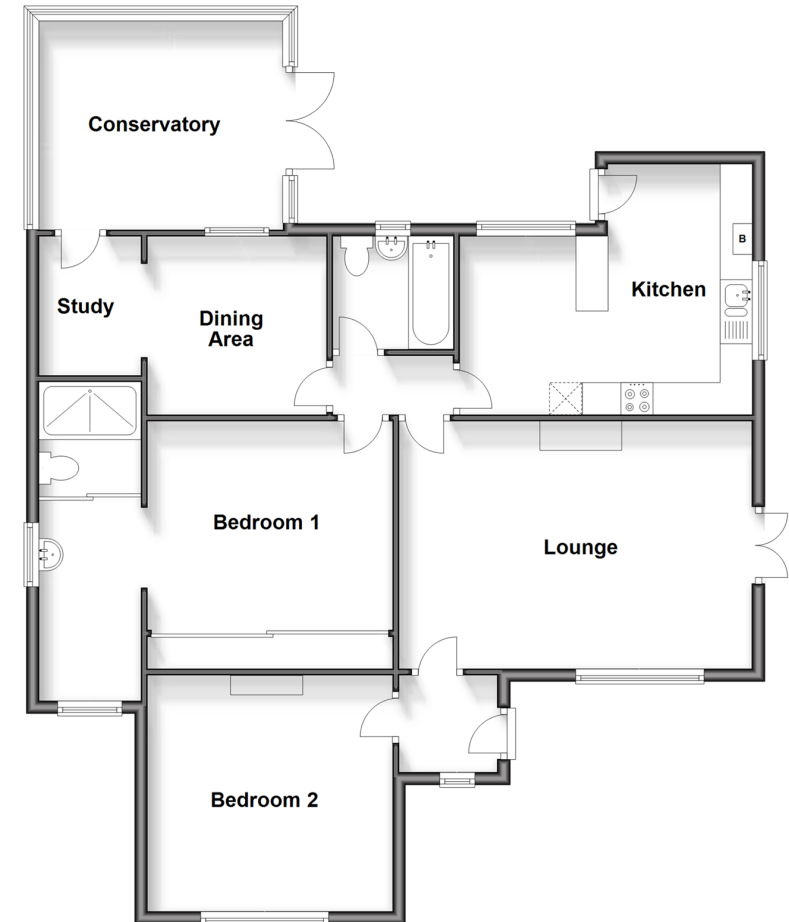
OUTSIDE

Off Road Parking

Garage

Front & Rear Gardens

Ground Floor
Approx. 108.1 sq. metres (1163.6 sq. feet)



Call New Romney - 01797 363745 ■ wardsofkennt.co.uk

- Legal advice should be taken to verify fixtures/fittings, planning, alterations and/or lease details
- Appliances & services are untested, dimensions are approximate and floor plans are not to scale
- Through a Homewise Home For Life Plan people aged 60+ can secure this property for up to 59% less, by purchasing a Lifetime Lease.



13525293/20240120/SRH/SRH