



Price
£299,995

Freehold

3x  1x  2x 

**The Green, Lydd, Kent,
TN29**

OVER 60?

Secure this property
for up to **59% less!**

Wards
Helping you move forwards



Main features

- Large, bright and airy home overlooking the village green
- Walking distance to town centre
- Schools on your doorstep
- Short drive to local beach at Dungeness
- Secluded rear garden

Accommodation

GROUND FLOOR

Entrance Hall

Lounge: 16'11 x 12'3 (5.16m x 3.74m)

Dining Room: 10'10 x 7'10 (3.30m x 2.39m)

Kitchen: 10'9 x 8'6 (3.28m x 2.59m)

FIRST FLOOR

Landing

Bedroom 1: 13'3 x 10'11 (4.04m x 3.33m)

Bedroom 2: 12'4 x 8'1 (3.76m x 2.47m)

Bedroom 3: 9'4 x 7'7 (2.85m x 2.31m)

Bathroom

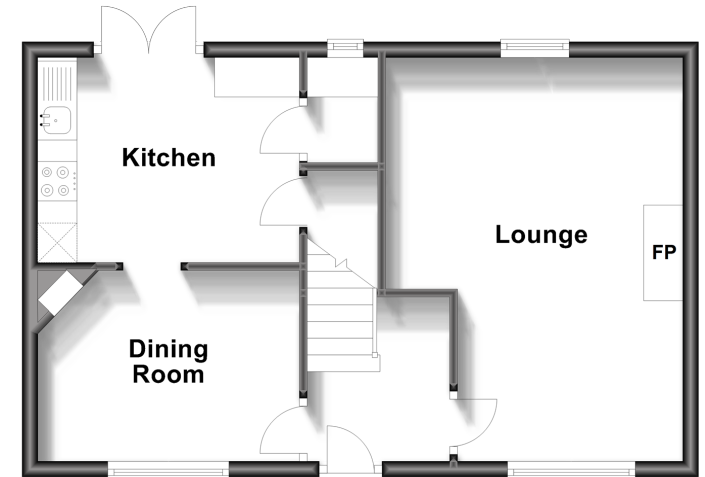
OUTSIDE

Off Road Parking

Rear Garden

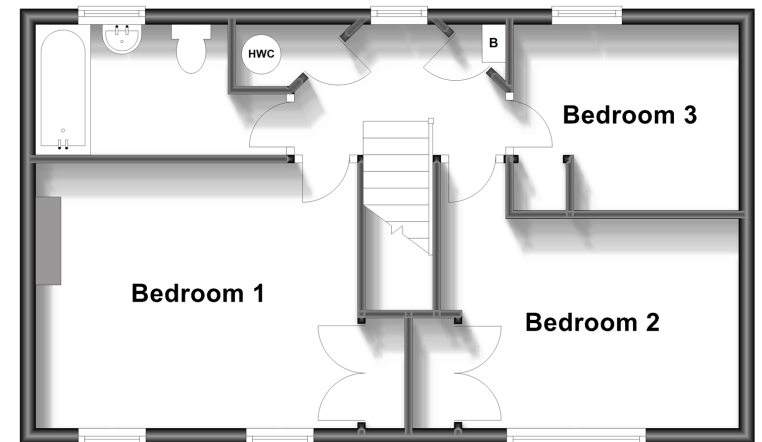
Ground Floor

Approx. 42.0 sq. metres (452.5 sq. feet)



First Floor

Approx. 45.8 sq. metres (493.2 sq. feet)



Call New Romney - 01797 363745 ■ wardsof Kent.co.uk

- Legal advice should be taken to verify fixtures/fittings, planning, alterations and/or lease details
- Appliances & services are untested, dimensions are approximate and floor plans are not to scale
- Through a Homewise Home For Life Plan people aged 60+ can secure this property for up to 59% less, by purchasing a Lifetime Lease.



13525303/20230610/AH/CA