



Guide Price
£247,500

Freehold

3x  1x  1x 

**Robin Hood Lane, Lydd,
Romney Marsh, Kent,
TN29**

OVER 60?

Secure this property
for up to **59% less!**

Wards
Helping you move forwards



Main features

- Ideal opportunity to buy a quick sale priced home
- No onward chain
- Spacious bright and airy accommodation
- Stunning unspoilt far reaching views
- Short drive to the local beach

Accommodation

GROUND FLOOR

Porch
 Entrance Hall
 Lounge/Diner: (L-shaped) 18'10 x 10'0 (5.74m x 3.05m) plus 5'6 x 7'5 (1.68m x 2.26m)
 Kitchen: 11'8 x 7'7 (3.56m x 2.31m)

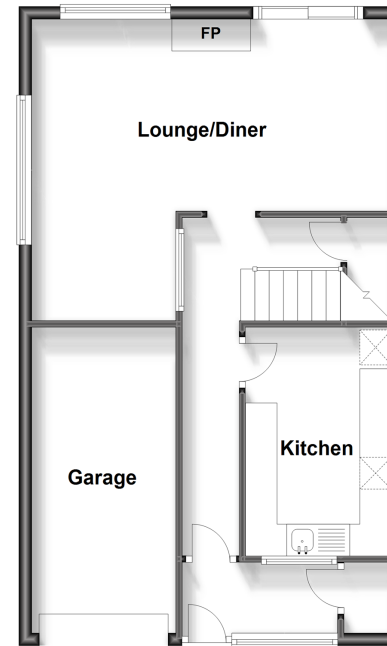
FIRST FLOOR

Landing
 Bedroom 1: 13'0 x 9'4 (3.97m x 2.85m)
 Bedroom 2: 13'3 x 9'3 (4.04m x 2.82m)
 Bedroom 3: 9'11 x 9'1 (3.02m x 2.77m)
 Bathroom

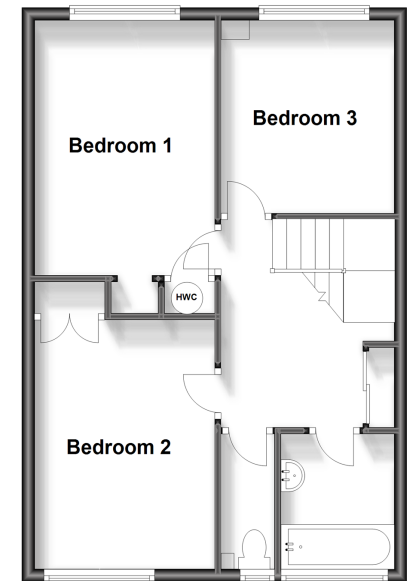
OUTSIDE

Off Road Parking
 Garage
 Front & Rear Gardens

Ground Floor
 Approx. 55.0 sq. metres (592.2 sq. feet)



First Floor
 Approx. 49.1 sq. metres (528.8 sq. feet)



Call New Romney - 01797 363745 ■ wardsofken.co.uk

- Legal advice should be taken to verify fixtures/fittings, planning, alterations and/or lease details
- Appliances & services are untested, dimensions are approximate and floor plans are not to scale
- Through a Homewise Home For Life Plan people aged 60+ can secure this property for up to 59% less, by purchasing a Lifetime Lease.



13525308/20230918/KW/CA