



OVER 60?

Secure this property
for up to **59% less!**

Guide Price

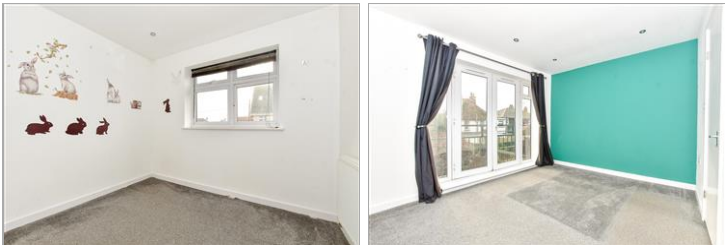
£450,000

Freehold

4x  2x  1x 

**Station Road,
Dymchurch, Romney
Marsh, Kent, TN29**

Wards
Helping you move forwards



Main features

- Modern individual family home spread over 3 floors
- No onward chain so a quick sale is available
- Short walk to town centre
- Comprehensive range of shops in New Romney for all your needs
- Short drive to the beach

Accommodation

GROUND FLOOR

Entrance Hall
Utility/Cloakroom
Kitchen: 9'11 x 9'5 (3.02m x 2.87m)
Lounge/Diner: 21'10 x 10'10 (6.66m x 3.30m)

FIRST FLOOR

Landing
Bedroom 1: 12'2 x 11'8 (3.71m x 3.56m)
En-Suite Shower Room
Bedroom 2: 9'3 x 8'0 (2.82m x 2.44m)
Bedroom 3: 12'3 x 7'1 (3.74m x 2.16m)
Bathroom

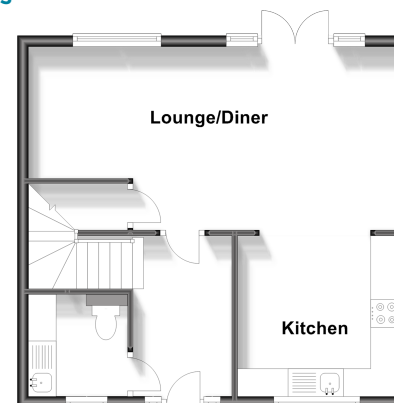
SECOND FLOOR

Landing
Storage Room: 9'4 x 4'3 (2.85m x 1.30m)
Bedroom 4: 13'1 x 11'11 (3.99m x 3.63m)
Shower Room

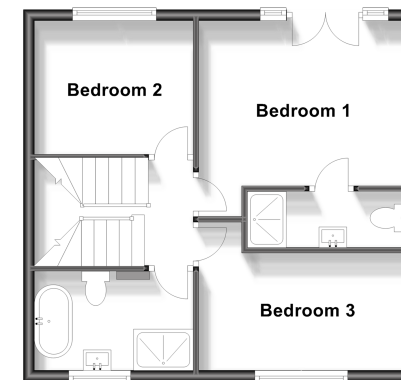
OUTSIDE

Off Road Parking
Front & Rear Gardens

Ground Floor
Approx. 42.0 sq. metres (452.4 sq. feet)



First Floor
Approx. 42.0 sq. metres (452.4 sq. feet)



Second Floor
Approx. 26.9 sq. metres (290.0 sq. feet)



Call New Romney - 01797 363745 ■ wardsof Kent.co.uk

- Legal advice should be taken to verify fixtures/fittings, planning, alterations and/or lease details
- Appliances & services are untested, dimensions are approximate and floor plans are not to scale
- Through a Homewise Home For Life Plan people aged 60+ can secure this property for up to 59% less, by purchasing a Lifetime Lease.



13525315/20240206/CA/CA