



Guide Price
£285,000

Freehold

3x  1x  1x 

**The Derings, Lydd,
Romney Marsh, Kent,
TN29**

OVER 60?

Secure this property
for up to **59% less!**

Wards
Helping you move forwards



Main features

- Amazing home, one of the best of its kind
- Immaculately presented
- Good sized mature landscaped, low maintenance garden
- Conservatory to enjoy the garden from all year round
- Quiet mews location
- Short walk from the town centre

Accommodation

GROUND FLOOR

Entrance Hall

Lounge: 18'2 x 11'5 (5.54m x 3.48m)

Conservatory: 12'5 x 9'5 (3.79m x 2.87m)

Kitchen: 11'5 x 8'7 (3.48m x 2.62m)

FIRST FLOOR

Landing

Bedroom 1: 13'0 (3.97m) x 10'8 (3.25m)
narrowing to 9'9 (2.97m)

Bedroom 2: 10'4 x 6'1 (3.15m x 1.86m)

Bedroom 3: 10'0 x 5'8 (3.05m x 1.73m)

Bathroom

Separate Toilet

OUTSIDE

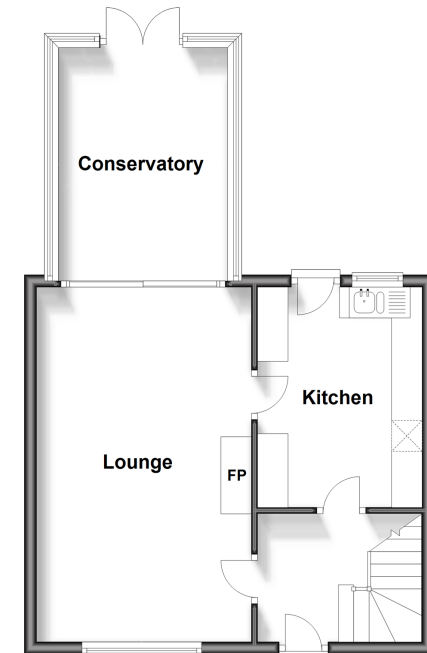
Off Road Parking

Garage

Front & Rear Gardens

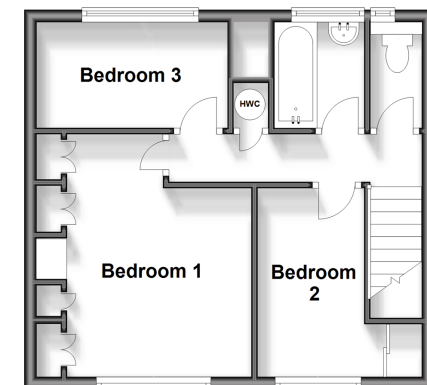
Ground Floor

Approx. 47.1 sq. metres (507.4 sq. feet)



First Floor

Approx. 36.4 sq. metres (391.7 sq. feet)



Call New Romney - 01797 363745 ■ wardsof Kent.co.uk

- Legal advice should be taken to verify fixtures/fittings, planning, alterations and/or lease details
- Appliances & services are untested, dimensions are approximate and floor plans are not to scale
- Through a Homewise Home For Life Plan people aged 60+ can secure this property for up to 59% less, by purchasing a Lifetime Lease.



13525319/20240217/AH/CA