



Price
£250,000

Freehold

3x  1x  2x 

**Wolesley Terrace,
Dengemarsh Road,
Lydd, Romney Marsh,
Kent, TN29**

OVER 60?

Secure this property
for up to **59% less!**

Wards
Helping you move forwards



Main features

- This lovely much improved home is ready to move into
- Detached 1 1/2 size garage and off road parking
- No onward chain
- Good sized rear garden
- Fantastic open aspect to the front overlooking meadows and houses

Accommodation

GROUND FLOOR

Entrance Hall

Lounge: 14'4 x 11'10 (4.37m x 3.61m)

Dining Room: 11'1 x 9'7 (3.38m x 2.92m)

Kitchen: 11'5 x 8'5 (3.48m x 2.57m)

Rear Lobby

Bathroom

FIRST FLOOR

Landing

Bedroom 1: 15'7 x 11'4 (4.75m x 3.46m)

Bedroom 2: 11'3 x 8'5 (3.43m x 2.57m)

Bedroom 3: 10'2 x 8'2 (3.10m x 2.49m)

OUTSIDE

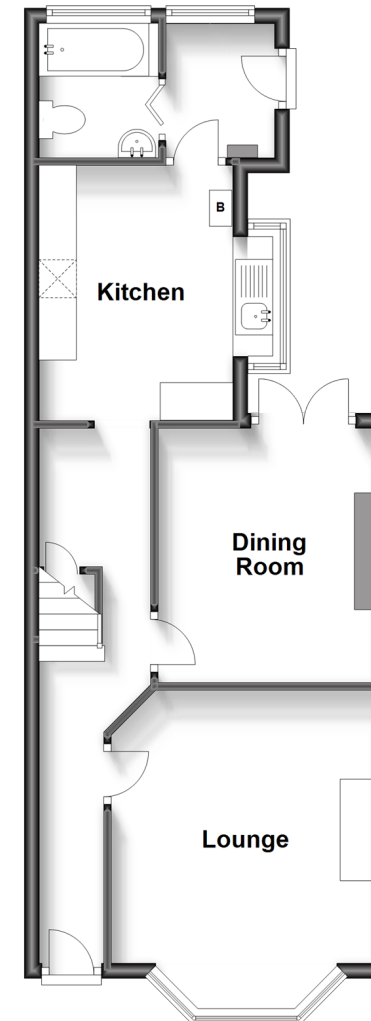
Front & Rear Gardens

Off Road Parking

Garage

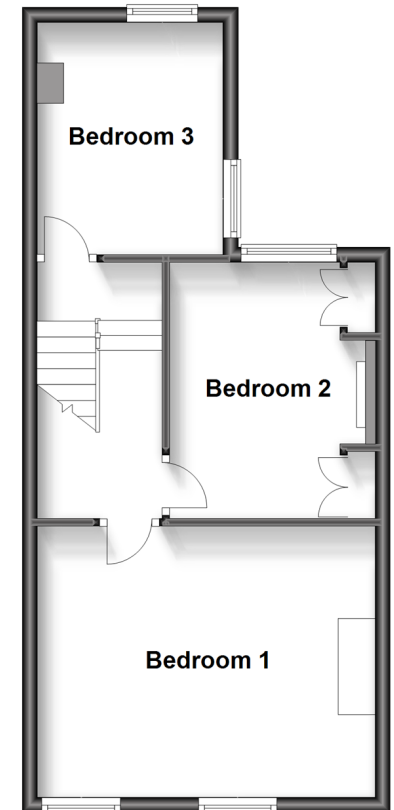
Ground Floor

Approx. 47.9 sq. metres (515.6 sq. feet)



First Floor

Approx. 40.1 sq. metres (431.6 sq. feet)



Call New Romney - 01797 363745 ■ wardsof Kent.co.uk

- Legal advice should be taken to verify fixtures/fittings, planning, alterations and/or lease details
- Appliances & services are untested, dimensions are approximate and floor plans are not to scale
- Through a Homewise Home For Life Plan people aged 60+ can secure this property for up to 59% less, by purchasing a Lifetime Lease.



13525334/20230624/AH/CA