



OVER 60?

Secure this property
for up to **59% less!**

Guide Price

£300,000

Freehold

3x  1x  1x 

**Holly Road, St Mary's
Bay, Romney Marsh,
Kent, TN29**

Wards
Helping you move forwards



Main features

- Located on a corner plot just around the corner from bus routes and the seafront
- Sunny garden to relax or entertain in
- Modern, neutral decoration, new kitchen fitted in 2022
- Block paved driveway plus garage
- Handy for Dymchurch with its many shops and cafes

Accommodation

GROUND FLOOR

Entrance Hall

Lounge/Diner: (L-shaped) 16'4 x 11'11 (4.98m x 3.63m) plus 8'9 x 9'3 (2.67m x 2.82m)

Kitchen: 9'9 x 9'0 (2.97m x 2.75m)

Bedroom 1: 12'11 x 8'10 (3.94m x 2.69m)

Bedroom 2: 12'0 x 9'1 (3.66m x 2.77m)

Bedroom 3: 9'6 x 6'11 (2.90m x 2.11m)

Bathroom

OUTSIDE

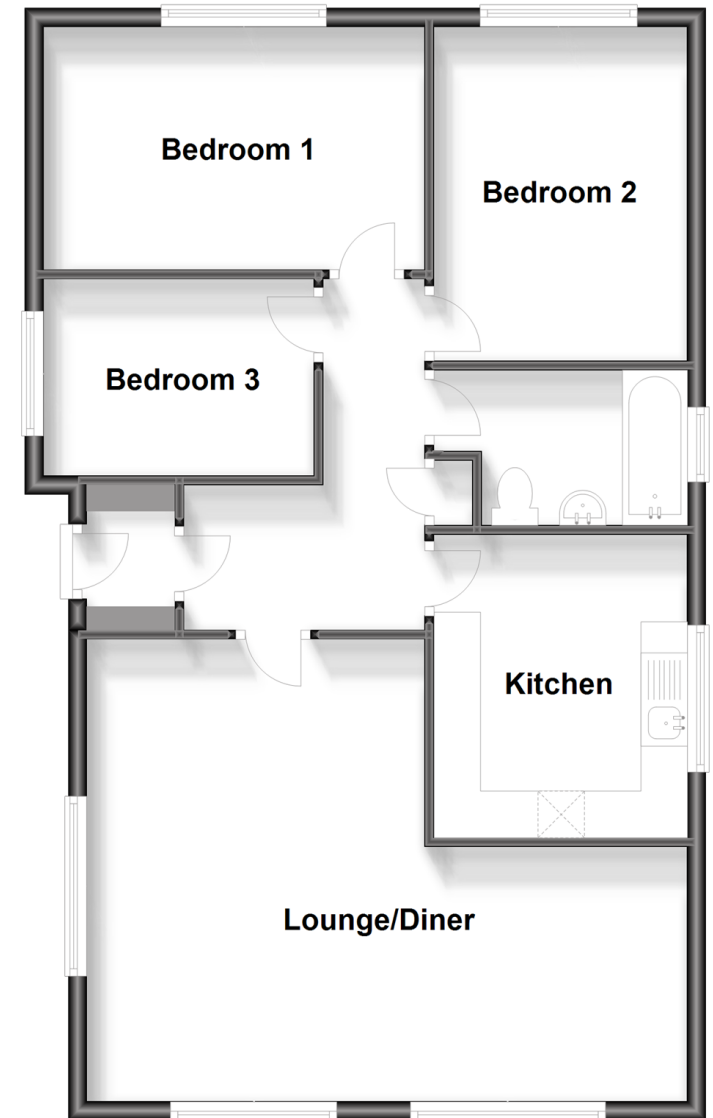
Off Road Parking

Garage

Front & Rear Gardens

Ground Floor

Approx. 76.9 sq. metres (827.5 sq. feet)



Call New Romney - 01797 363745 ■ wardsofkent.co.uk

- Legal advice should be taken to verify fixtures/fittings, planning, alterations and/or lease details
- Appliances & services are untested, dimensions are approximate and floor plans are not to scale
- Through a Homewise Home For Life Plan people aged 60+ can secure this property for up to 59% less, by purchasing a Lifetime Lease.



13525373/20230920/MEL/CA