



**Guide Price**  
**£300,000**

**Freehold**

2x  2x  2x 

**Cannon Street, Lydd,  
Kent, TN29**

**OVER 60?**

Secure this property  
for up to **59% less!**

*Wards*  
Helping you move forwards





## Main features

- Unique cottage in a town centre location with lots of character
- Gated courtyard for relaxing or parking a vehicle
- Log burner for those chilly evenings
- Currently divided to create separate annexe
- Convenient location handy for the shops

## Accommodation

### GROUND FLOOR

Lounge/Family Area: 16'9 x 12'7 (5.11m x 3.84m)

Kitchen/Diner: 12'10 x 12'5 (3.91m x 3.79m)

Bedroom: 11'11 x 9'6 (3.63m x 2.90m)

Inner Hallway

Shower Room

Entrance Hall

Bathroom

Kitchen/Diner: 14'11 x 8'0 (4.55m x 2.44m)  
plus 6'0 x 5'6 (1.83m x 1.68m)

Lounge: 21'0 x 11'0 (6.41m x 3.36m)

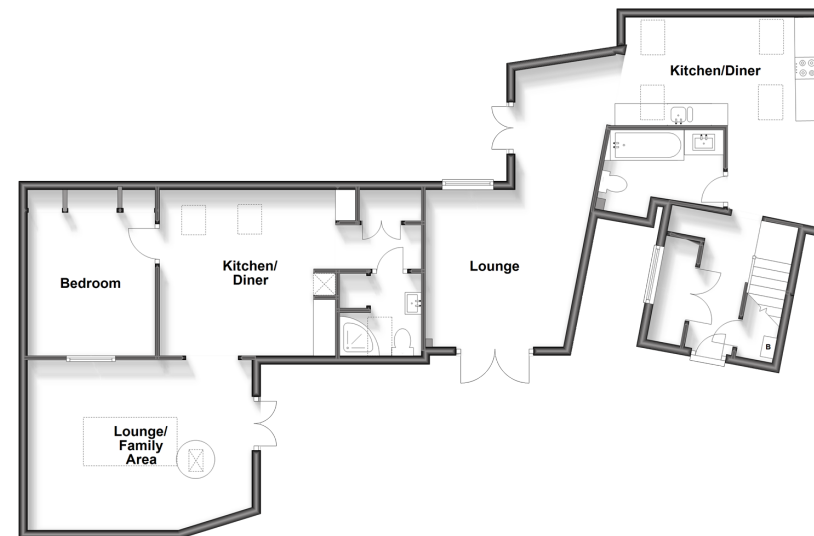
### FIRST FLOOR

Bedroom: 9'10 x 9'9 (3.00m x 2.97m)

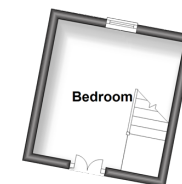
### OUTSIDE

Courtyard Garden/Parking Area

**Ground Floor**  
Approx. 103.4 sq. metres (1112.7 sq. feet)



**First Floor**  
Approx. 9.2 sq. metres (98.7 sq. feet)



**Call New Romney - 01797 363745 ■ [wardsof Kent.co.uk](http://wardsof Kent.co.uk)**

- Legal advice should be taken to verify fixtures/fittings, planning, alterations and/or lease details
- Appliances & services are untested, dimensions are approximate and floor plans are not to scale
- Through a Homewise Home For Life Plan people aged 60+ can secure this property for up to 59% less, by purchasing a Lifetime Lease.



13525382/20230923/AH/SRH