



**Guide Price**  
**£300,000**

**Freehold**

3x  1x  1x 

**The Green, Lydd,  
Romney Marsh, Kent,  
TN29**



**OVER 60?**

Secure this property  
for up to **59% less!**

*Wards*  
Helping you move forwards





## Main features

- Much improved home in a tucked away position
- Secluded rear garden
- Plenty of off road parking
- Short walk to the town centre with local shops and amenities
- Close to the famous Rype green and Lydd primary school

## Accommodation

### GROUND FLOOR

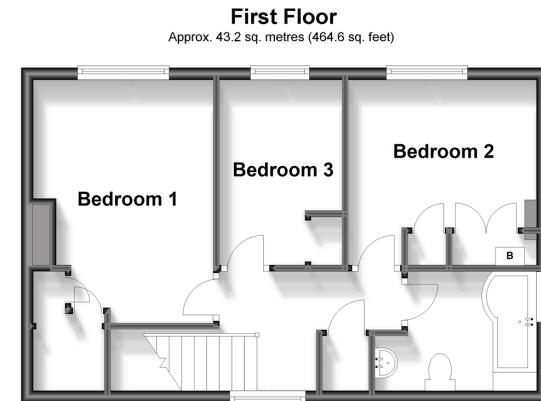
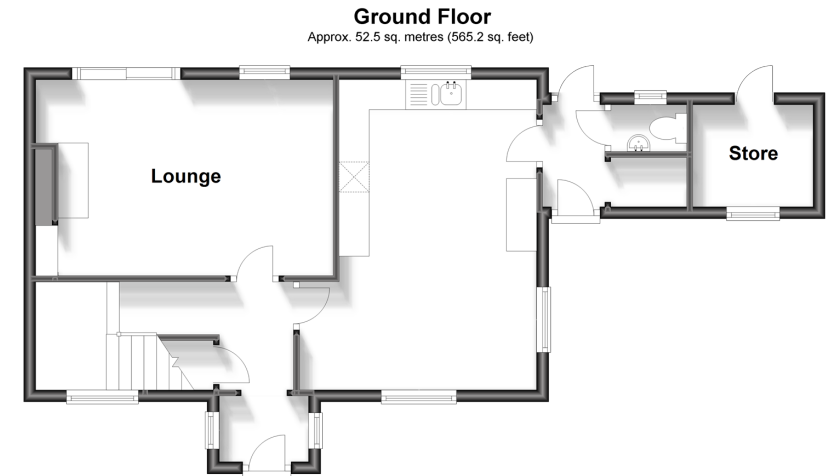
Porch  
Entrance Hall  
Lounge: 16'8 x 10'7 (5.08m x 3.23m)  
Kitchen/Diner: 17'5 x 10'7 (5.31m x 3.23m)  
Utility  
Cloakroom

### FIRST FLOOR

Landing  
Bedroom 1: 13'6 x 9'4 (4.12m x 2.85m)  
Bedroom 2: 10'2 x 8'7 (3.10m x 2.62m)  
Bedroom 3: 10'7 x 6'7 (3.23m x 2.01m)  
Bathroom

### OUTSIDE

Off Road Parking  
Front & Rear Gardens  
Store



**Call New Romney - 01797 363745 ■ [wardsof Kent.co.uk](http://wardsof Kent.co.uk)**

- Legal advice should be taken to verify fixtures/fittings, planning, alterations and/or lease details
- Appliances & services are untested, dimensions are approximate and floor plans are not to scale
- Through a Homewise Home For Life Plan people aged 60+ can secure this property for up to 59% less, by purchasing a Lifetime Lease.



13525390/20231129/AH/CA