



**OVER 60?**

Secure this property  
for up to **59% less!**

**Guide Price**  
**£350,000**

**Freehold**

3x  1x  1x 

**Gazedown, St Mary's  
Bay, Romney Marsh,  
Kent, TN29**

*Wards*  
Helping you move forwards





## Main features

- Spacious family home with no onward chain
- Located in a small desirable mews
- Walking distance to local shops and beach
- Enjoy sunsets from the end of the garden
- Landscaped, low maintenance gardens

## Accommodation

### GROUND FLOOR

Entrance Hall

Lounge: 18'5 x 13'8 (5.62m x 4.17m)

Cloakroom

Kitchen: 13'6 x 10'6 (4.12m x 3.20m)

### FIRST FLOOR

Landing

Bedroom 1: 18'5 x 14'0 (5.62m x 4.27m)

Bedroom 2: 10'4 x 9'6 (3.15m x 2.90m)

Bedroom 3: 10'6 x 8'6 (3.20m x 2.59m)

Bathroom

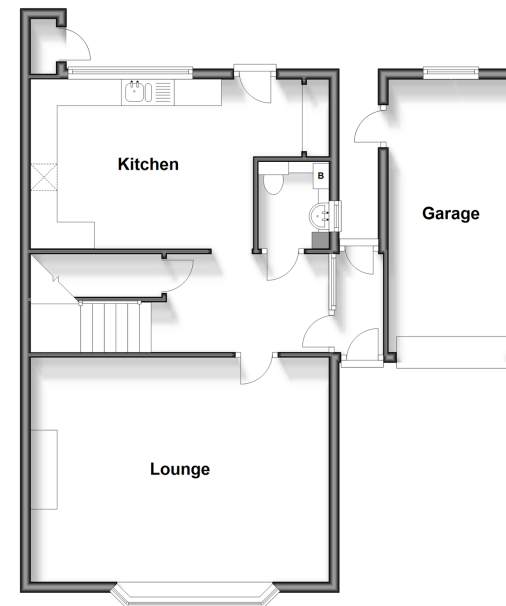
### OUTSIDE

Off Road Parking

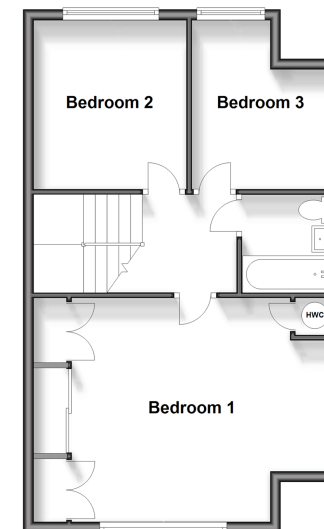
Garage

Front & Rear Gardens

**Ground Floor**  
Approx. 68.7 sq. metres (739.0 sq. feet)



**First Floor**  
Approx. 51.4 sq. metres (553.1 sq. feet)



**Call New Romney - 01797 363745 ■ [wardsofkennt.co.uk](http://wardsofkennt.co.uk)**

- Legal advice should be taken to verify fixtures/fittings, planning, alterations and/or lease details
- Appliances & services are untested, dimensions are approximate and floor plans are not to scale
- Through a Homewise Home For Life Plan people aged 60+ can secure this property for up to 59% less, by purchasing a Lifetime Lease.



13525419/20240323/AH/CA