



OVER 60?

Secure this property
for up to **59% less!**

Price

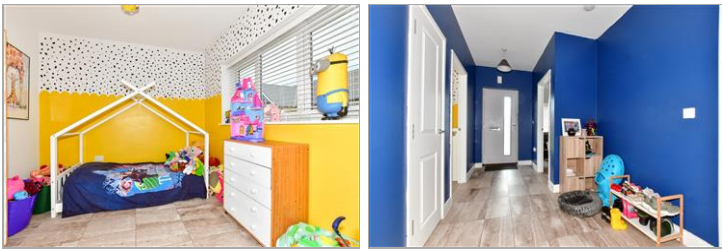
£350,000

Freehold

2x  1x  1x 

**Pippin Close, New
Romney, Kent, TN28**

Wards
Helping you move forwards



Main features

- Architect designed home in a quiet modern mews
- Allocated parking space
- Wrap around garden
- Level living low maintenance home
- Short walk to town centre and children's park

Accommodation

GROUND FLOOR

Entrance Hall

Lounge: 12'9 x 12'2 (3.89m x 3.71m)

Kitchen: 17'6 (5.34m) narrowing to 8'2 (2.49m) x 10'4 (3.15m)

Bedroom 1: 13'8 x 10'2 (4.17m x 3.10m)

Bedroom 2: 10'7 x 10'3 (3.23m x 3.13m)

Bathroom

OUTSIDE

Allocated Parking Space

Front, Side & Rear Gardens

Ground Floor

Approx. 71.1 sq. metres (764.9 sq. feet)



Call New Romney - 01797 363745 ■ wardsof Kent.co.uk

- Legal advice should be taken to verify fixtures/fittings, planning, alterations and/or lease details
- Appliances & services are untested, dimensions are approximate and floor plans are not to scale
- Through a Homewise Home For Life Plan people aged 60+ can secure this property for up to 59% less, by purchasing a Lifetime Lease.



13525422/20231024/AH/CA