



Price
£375,000

Freehold

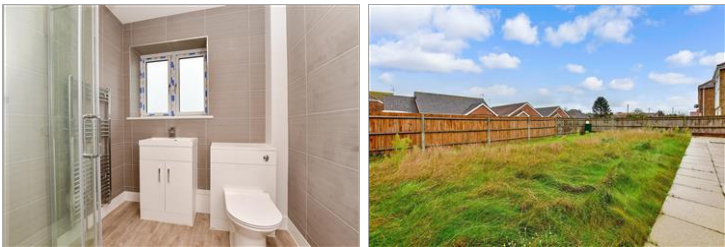
3x  2x  1x 

**Prime View, New
Romney, Kent, TN28**

OVER 60?

Secure this property
for up to **59% less!**

Wards
Helping you move forwards



Main features

- Brand new contemporary designed home
- Idyllic and desirable location
- Spacious accommodation throughout
- Stunning kitchen and beautifully appointed bathrooms
- Short walk to seafront

Accommodation

GROUND FLOOR

Entrance Hall

Lounge: 20'9 x 13'7 (6.33m x 4.14m)

Kitchen: 13'8 x 9'8 (4.17m x 2.95m)

Utility Room: 11'10 x 5'9 (3.61m x 1.75m)

Cloakroom

FIRST FLOOR

Landing

Bedroom 1: 14'1 x 12'8 (4.30m x 3.86m)

En-Suite Shower Room

Dressing Area

Bedroom 2: 11'3 x 10'2 (3.43m x 3.10m)

Bedroom 3: 10'1 x 7'8 (3.08m x 2.34m)

Bathroom

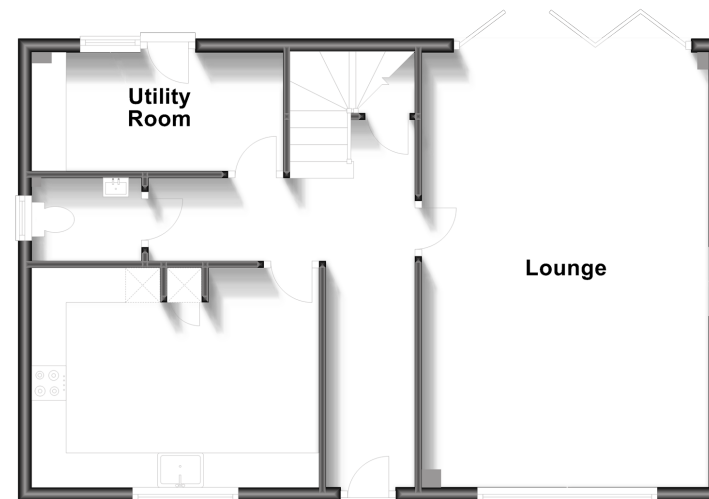
OUTSIDE

Large Rear Garden

Driveway

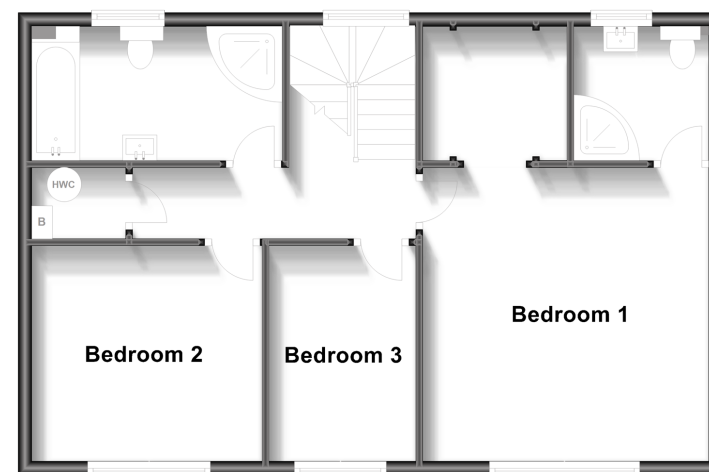
Ground Floor

Approx. 62.1 sq. metres (668.9 sq. feet)



First Floor

Approx. 62.1 sq. metres (668.9 sq. feet)



Call New Romney - 01797 363745 ■ wardsofken.co.uk

- Legal advice should be taken to verify fixtures/fittings, planning, alterations and/or lease details
- Appliances & services are untested, dimensions are approximate and floor plans are not to scale
- Through a Homewise Home For Life Plan people aged 60+ can secure this property for up to 59% less, by purchasing a Lifetime Lease.



13525425/20240328/AH/CA