



Price
£375,000

Freehold

4x  2x  2x 

**Prime View, New
Romney, Kent, TN28**

OVER 60?

Secure this property
for up to **59% less!**

Wards
Helping you move forwards



Main features

- Lovely countryside views to the rear
- New build with NHBC warranty until March 2032
- Spacious accommodation, stunning kitchen and bathrooms
- Idyllic and desirable location just a short walk to the beach and from local shops
- Walking distance to both primary and secondary schools and new Romney High Street

Accommodation

GROUND FLOOR

Entrance Hall
Cloakroom
Family Room: 15'7 x 9'8 (4.75m x 2.95m)

FIRST FLOOR

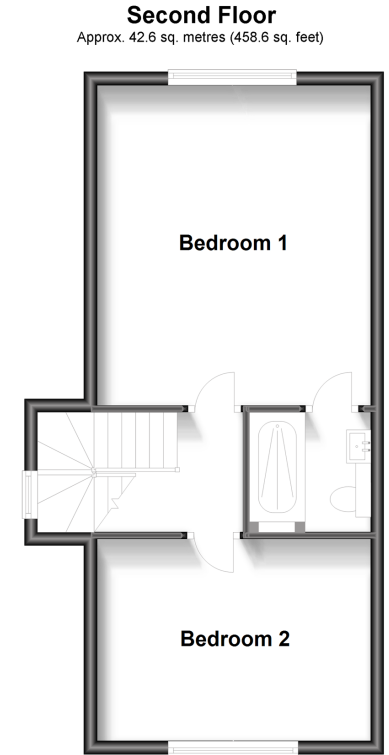
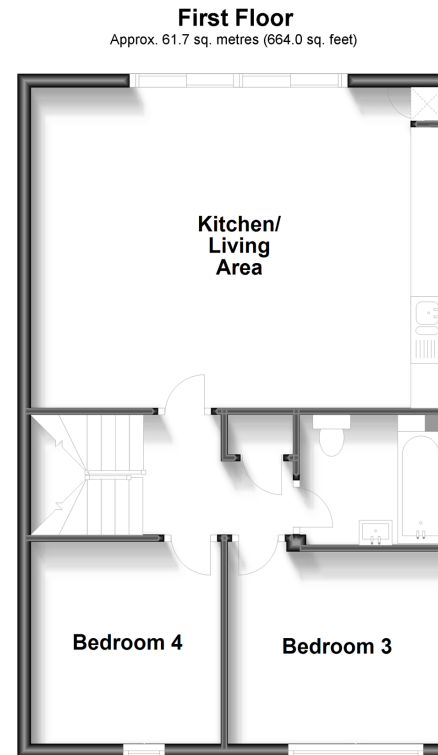
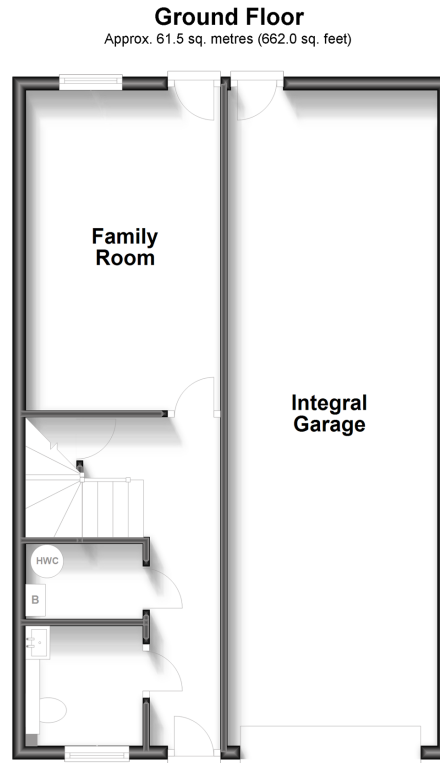
Landing
Kitchen/Living Area: 15'5 x 10'3 (4.70m x 3.13m)
plus 9'8 x 15'6 (2.95m x 4.73m)
Bedroom 3: 10'7 x 9'4 (3.23m x 2.85m)
Bedroom 4: 10'1 x 9'5 (3.08m x 2.87m)
Bathroom

SECOND FLOOR

Landing
Bedroom 1: 15'7 x 13'6 (4.75m x 4.12m)
Bedroom 2: 13'8 x 10'0 (4.17m x 3.05m)
En-Suite Shower Room

OUTSIDE

Off Road Parking
Integral Garage
Rear Garden



Call New Romney - 01797 363745 ■ wardsokent.co.uk

■ Legal advice should be taken to verify fixtures/fittings, planning, alterations and/or lease details
■ Through a Homewise Home For Life Plan people aged 60+ can secure this property for up to 59% less, by purchasing a Lifetime Lease.

■ Appliances & services are untested, dimensions are approximate and floor plans are not to scale

EPC RATING	CURRENT:	POTENTIAL:
	B(84)	B(91)

13525426/20240328/AH/CA