



OVER 60?

Secure this property
for up to **59% less!**

Price

£275,000

Freehold

3x  1x  1x 

**Grassmere, St. Mary's
Bay, Romney Marsh,
Kent, TN29**

Wards
Helping you move forwards



Main features

- Modern, bright and airy home situated in a quiet mews
- Abuts farmland to the rear
- Romney, Hythe and Dymchurch miniature railway runs by the boundary
- Short drive to local shops and amenities
- No onward chain

Accommodation

GROUND FLOOR

Porch
Entrance Hall
Cloakroom
Lounge: 14'7 x 12'1 (4.45m x 3.69m)
Dining Area: 9'5 x 8'5 (2.87m x 2.57m)
Kitchen: 8'9 x 8'5 (2.67m x 2.57m)
Side Porch

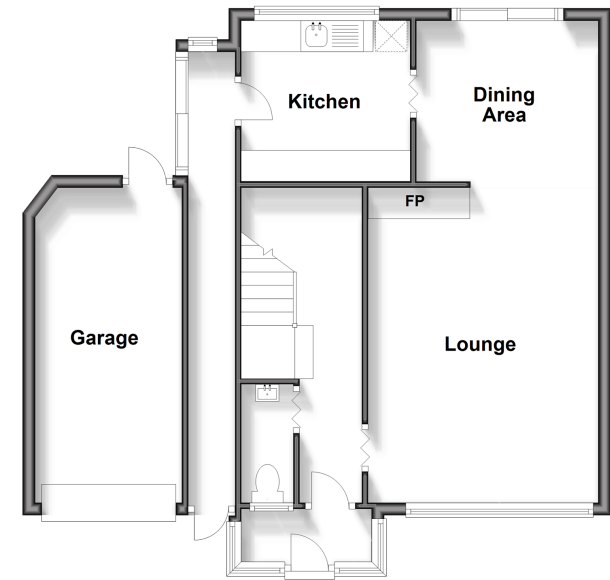
FIRST FLOOR

Landing
Bedroom 1: 12'8 x 10'1 (3.86m x 3.08m)
Bedroom 2: 10'11 x 10'6 (3.33m x 3.20m)
Bedroom 3: 8'4 x 7'4 (2.54m x 2.24m)
Wet Room

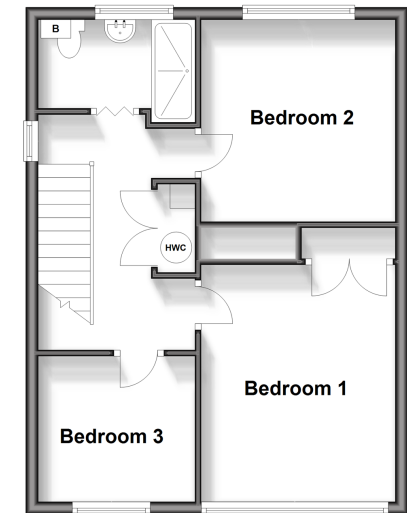
OUTSIDE

Off Road Parking
Garage
Front & Rear Gardens

Ground Floor
Approx. 65.0 sq. metres (700.1 sq. feet)



First Floor
Approx. 44.4 sq. metres (478.3 sq. feet)



Call New Romney - 01797 363745 ■ wardsofkent.co.uk

- Legal advice should be taken to verify fixtures/fittings, planning, alterations and/or lease details
- Appliances & services are untested, dimensions are approximate and floor plans are not to scale
- Through a Homewise Home For Life Plan people aged 60+ can secure this property for up to 59% less, by purchasing a Lifetime Lease.



13525429/20240228/SRH/CA