



Guide Price
£295,000

Freehold

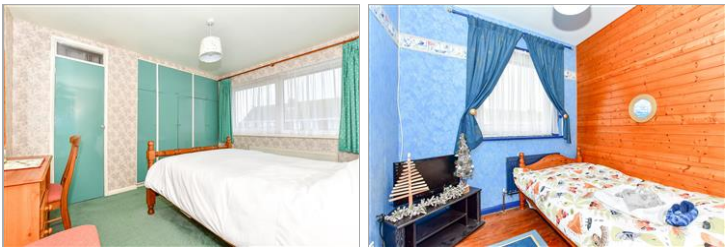
3x  1x  1x 

**Teelin Close, St Mary's
Bay, Romney Marsh,
Kent, TN29**

OVER 60?

Secure this property
for up to **59% less!**

Wards
Helping you move forwards



Main features

- A real family home to enjoy
- Close to local shops and day care centre with its private clubs
- Walking distance to sandy beach
- Mature well stocked garden safe for children to play in
- Centre of the village which has a lovely community feel

Accommodation

GROUND FLOOR

Entrance Hall

Lounge: 13'5 x 12'8 (4.09m x 3.86m)

Kitchen/Diner: 20'1 x 9'10 (6.13m x 3.00m)

Conservatory: 12'11 x 10'2 (3.94m x 3.10m)

FIRST FLOOR

Landing

Bedroom 1: 12'6 x 10'0 up to fitted wardrobes (3.81m x 3.05m)

Bedroom 2: 10'6 x 9'7 (3.20m x 2.92m)

Bedroom 3: 8'4 x 7'4 (2.54m x 2.24m)

Shower Room

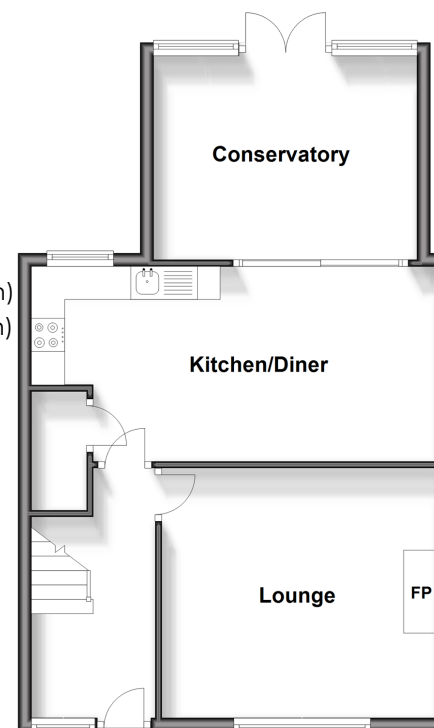
OUTSIDE

Off Road Parking

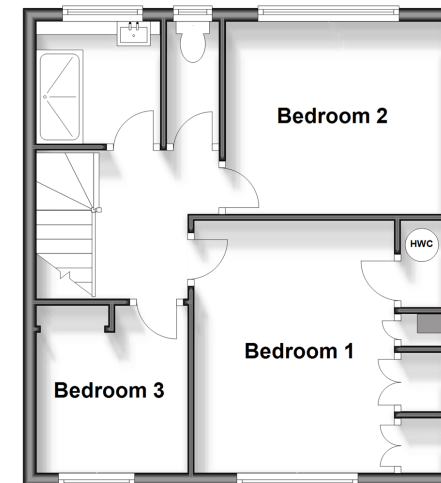
Garage

Front & Rear Gardens

Ground Floor
Approx. 54.0 sq. metres (581.1 sq. feet)

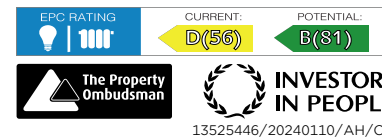


First Floor
Approx. 41.4 sq. metres (446.0 sq. feet)



Call New Romney - 01797 363745 ■ wardsof Kent.co.uk

- Legal advice should be taken to verify fixtures/fittings, planning, alterations and/or lease details
- Appliances & services are untested, dimensions are approximate and floor plans are not to scale
- Through a Homewise Home For Life Plan people aged 60+ can secure this property for up to 59% less, by purchasing a Lifetime Lease.



13525446/20240110/AH/CA