



**Guide Price**  
**£500,000**

**Freehold**

4x  2x  1x 

**Coast Drive, Lydd On  
Sea, Kent, TN29**

**OVER 60?**

Secure this property  
for up to **59% less!**

*Wards*  
Helping you move forwards





## Main features

- Gaze out to views across the English channel from this fabulous seafront home
- Bedrooms and bathrooms on both floors for flexibility
- Low maintenance garden to relax in
- Off road parking and car port
- Welcoming entrance hall which could be used as a dining room

## Accommodation

### GROUND FLOOR

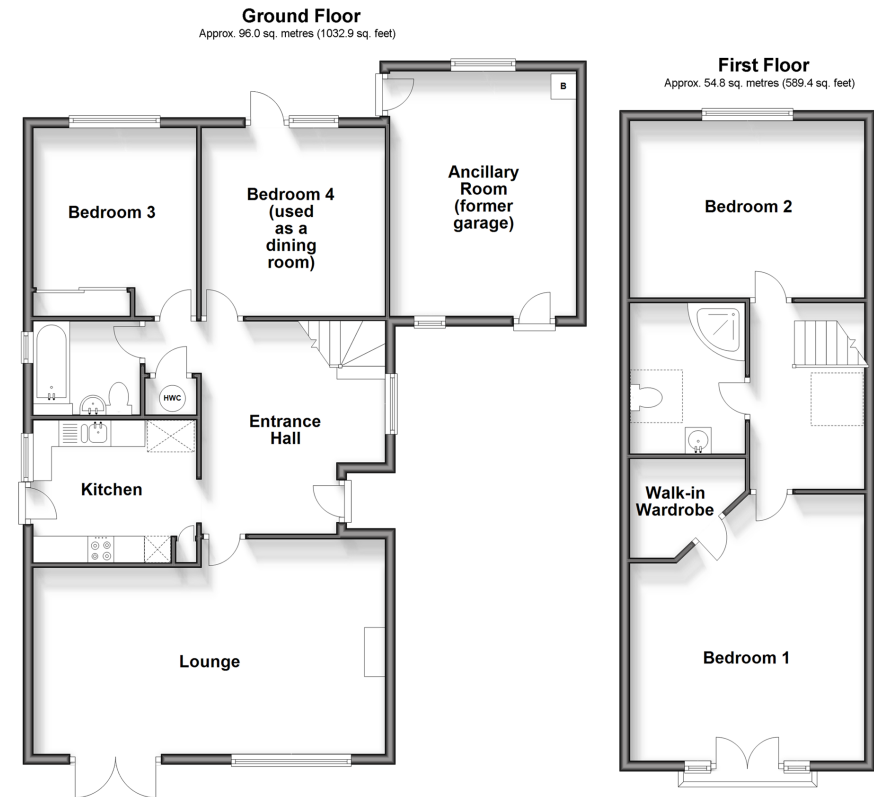
Entrance Hall: 13'3 x 11'7 (4.04m x 3.53m)  
 Bedroom 4(used as dining room): 11'10 x 11'7 (3.61m x 3.53m)  
 Bedroom 3: 11'8 x 10'3 (3.56m x 3.13m)  
 Bathroom  
 Kitchen: 10'3 x 8'10 (3.13m x 2.69m)  
 Lounge: 22'3 (6.79m) x 13'6 (4.12m) narrowing to 11'7 (3.53m)  
 Ancillary Room(former garage): 15'10 x 10'0 (4.83m x 3.05m)

### FIRST FLOOR

Galleried Landing  
 Bedroom 1: 16'7 x 14'9 (5.06m x 4.50m)  
 Walk-In Wardrobe  
 Juliet Balcony  
 Bedroom 2: 14'9 x 11'0 (4.50m x 3.36m)  
 Shower Room

### OUTSIDE

Off Road Parking  
 Car Port  
 Front & Rear Gardens  
 Summer House  
 Brick Built Shed



**Call New Romney - 01797 363745 ■ [wardsof Kent.co.uk](http://wardsof Kent.co.uk)**

- Legal advice should be taken to verify fixtures/fittings, planning, alterations and/or lease details
- Appliances & services are untested, dimensions are approximate and floor plans are not to scale
- Through a Homewise Home For Life Plan people aged 60+ can secure this property for up to 59% less, by purchasing a Lifetime Lease.



13525449/20240109/MEL/SRH