



Guide Price
£335,000

Freehold

3x  1x  1x 

**Marshall Terrace, Bleak
Road, Lydd, Romney
Marsh, Kent, TN29**

OVER 60?

Secure this property
for up to **59% less!**

Wards
Helping you move forwards



Main features

- High-end home built in 2022, 8 years NHBC warranty remaining
- Close to the town centre
- Short walk to 'The Rype' green
- Landscaped manageable rear garden and allocated parking
- Short drive to local beach at Dungeness and watersports centre

Accommodation

GROUND FLOOR

Entrance Hall

Kitchen: 9'6 x 6'5 (2.90m x 1.96m)

Lounge: 14'6 x 13'2 (4.42m x 4.02m)

Cloakroom

FIRST FLOOR

Landing

Bedroom 2: 13'9 x 10'6 (4.19m x 3.20m)

Bedroom 3: 8'8 x 7'4 (2.64m x 2.24m)

Bathroom

SECOND FLOOR

Bedroom 1: 17'4 x 10'1 (5.29m x 3.08m)

OUTSIDE

Rear Garden

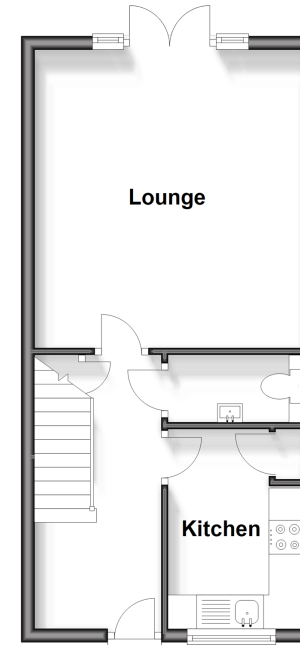
Allocated Parking

Call New Romney - 01797 363745 ■ wardsofkent.co.uk

- Legal advice should be taken to verify fixtures/fittings, planning, alterations and/or lease details
- Appliances & services are untested, dimensions are approximate and floor plans are not to scale
- Through a Homewise Home For Life Plan people aged 60+ can secure this property for up to 59% less, by purchasing a Lifetime Lease.

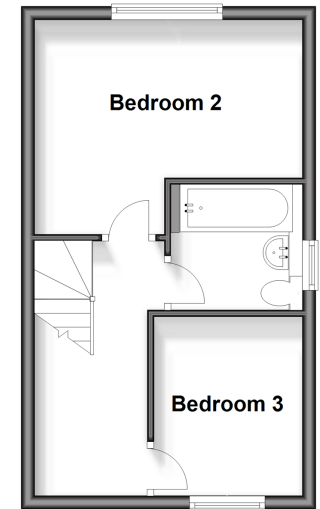
Ground Floor

Approx. 34.2 sq. metres (368.1 sq. feet)



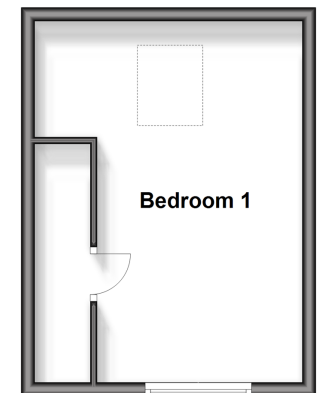
First Floor

Approx. 28.1 sq. metres (302.2 sq. feet)



Second Floor

Approx. 21.3 sq. metres (229.6 sq. feet)



13525469/20240321/MEL/CA