



Guide Price
£275,000

Freehold

3x  1x  1x 

**The Derings, Lydd,
Romney Marsh, Kent,
TN29**

OVER 60?

Secure this property
for up to **59% less!**

Wards
Helping you move forwards



Main features

- Much improved and extended family home
- Mature, well stocked rear garden
- Outbuilding/home office
- Popular village location
- Short walk to centre with shops and amenities
- Short drive to water sports centre and the beach

Accommodation

GROUND FLOOR

Entrance Hall

Kitchen: 18'1 x 7'3 (5.52m x 2.21m)

Lounge: 15'3 x 10'8 (4.65m x 3.25m)

Bedroom 3

FIRST FLOOR

Landing

Bedroom 1: 10'8 x 10'1 (3.25m x 3.08m)

Bedroom 2: 15'2 x 8'7 (4.63m x 2.62m)

Shower Room

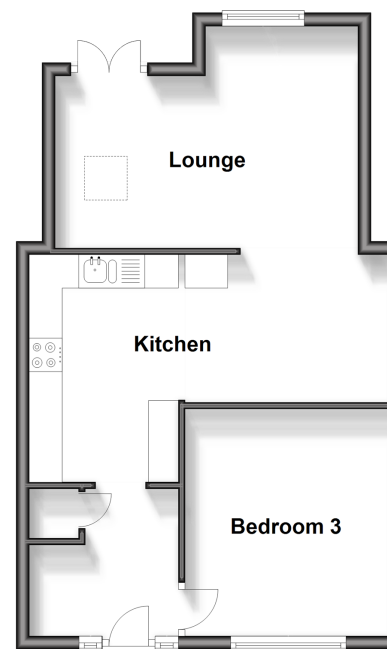
OUTSIDE

Off Road Parking

Front & Rear Gardens

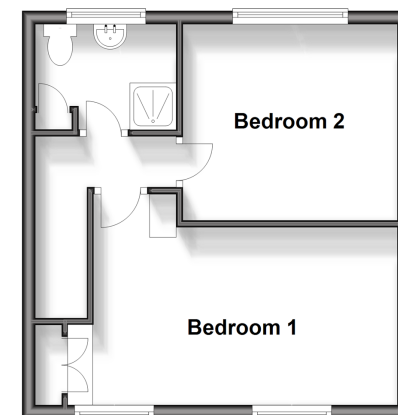
Ground Floor

Approx. 45.3 sq. metres (487.2 sq. feet)



First Floor

Approx. 31.3 sq. metres (336.8 sq. feet)



Call New Romney - 01797 363745 ■ wardsofkent.co.uk

- Legal advice should be taken to verify fixtures/fittings, planning, alterations and/or lease details
- Appliances & services are untested, dimensions are approximate and floor plans are not to scale
- Through a Homewise Home For Life Plan people aged 60+ can secure this property for up to 59% less, by purchasing a Lifetime Lease.



13525470/20240402/SRH/CA