



Guide Price
£475,000

Freehold

5x  3x  2x 

**Hardy Road, Greatstone,
New Romney, Kent,
TN28**

OVER 60?

Secure this property
for up to **59% less!**

Wards
Helping you move forwards



Main features

- Exclusive family home with a flexible layout
- Space for extended or growing family
- Bright and airy accommodation throughout
- Large kitchen/breakfast room
- Excellent off road parking and a garage/workshop

Accommodation

GROUND FLOOR

Porch
 Entrance Hall
 Kitchen/Breakfast Room: 14'4" (4.37m) x 10'7" (3.23m) narrowing to 8'3" (2.52m)
 Dining Area: 18'8" x 11'4" (5.69m x 3.46m)
 Lounge: 11'5" x 11'4" (3.48m x 3.46m)
 Bathroom
 Utility : 7'9" x 5'8" (2.36m x 1.73m)
 Bedroom 3: 14'6" x 10'8" (4.42m x 3.25m)
 Bedroom 4: 11'4" x 8'6" (3.46m x 2.59m)

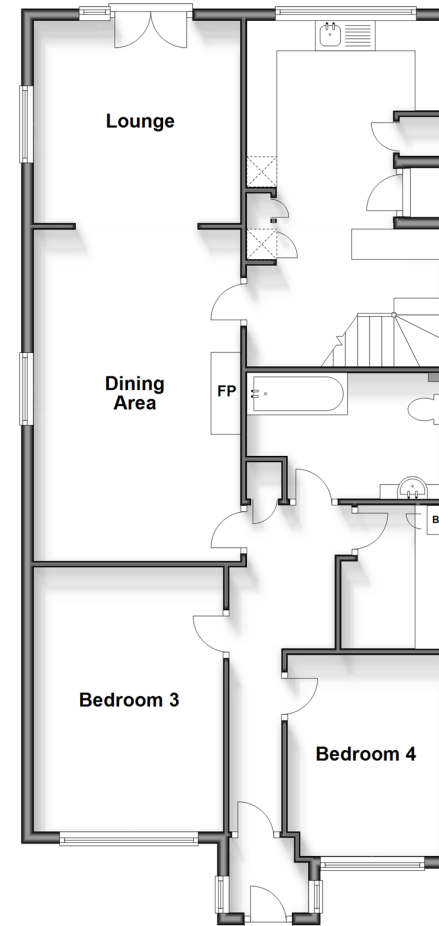
FIRST FLOOR

Bedroom 1: 16'9" x 14'9" (5.11m x 4.50m)
 En-suite Shower Room
 Bedroom 2: 14'0" x 9'0" (4.27m x 2.75m)
 Bedroom 5: 9'4" x 7'8" (2.85m x 2.34m)
 Bathroom

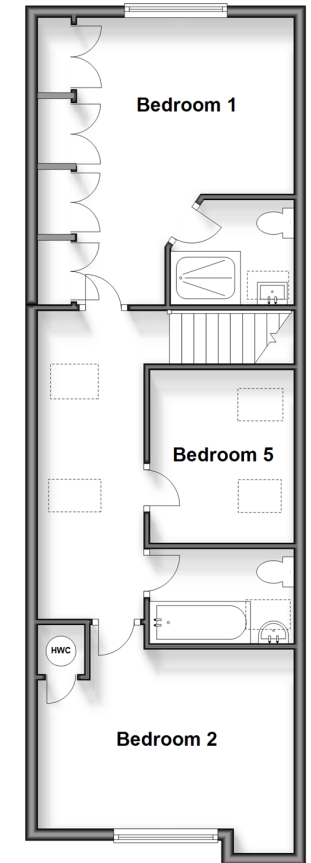
OUTSIDE

Off Road Parking
 Garage/Workshop
 Front & Rear Gardens
 Shed

Ground Floor
 Approx. 94.4 sq. metres (1015.9 sq. feet)



First Floor
 Approx. 58.0 sq. metres (624.7 sq. feet)



Call New Romney - 01797 363745 ■ wardsof Kent.co.uk

- Legal advice should be taken to verify fixtures/fittings, planning, alterations and/or lease details
- Appliances & services are untested, dimensions are approximate and floor plans are not to scale
- Through a Homewise Home For Life Plan people aged 60+ can secure this property for up to 59% less, by purchasing a Lifetime Lease.



13525472/20240321/SRH/CA