

OVER 60?

Secure this property
for up to **59% less!**



Guide Price
£365,000
Freehold

3x  1x  1x 

Adams Cottage, Station Road, Lydd,
Romney Marsh, Kent, TN29

Wards
Helping you move forwards



Main features

- Offers in excess of £365,000
- Characterful home walking distance from the town centre
- Large mature established garden
- Off road parking for a number of vehicles
- Modern style family kitchen/dining area plus a modern twist to the lounge
- Close to local primary school, short drive to New Romney

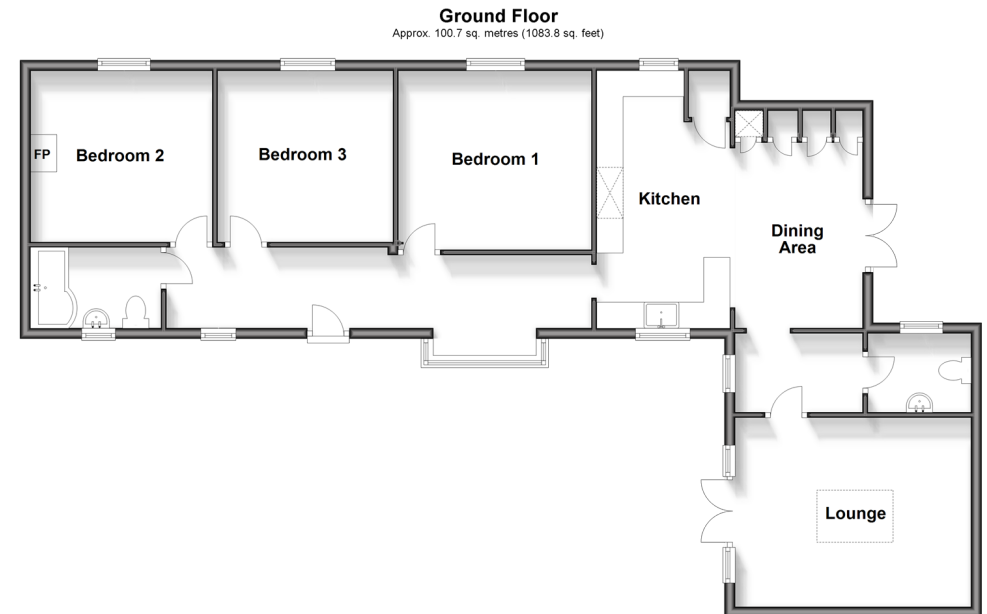
Accommodation

GROUND FLOOR

Entrance Hall
 Bedroom 1: 11'10 x 11'9 (3.61m x 3.58m)
 Bedroom 2: 11'1 x 10'7 (3.38m x 3.23m)
 Bedroom 3: 10'9 x 10'7 (3.28m x 3.23m)
 Bathroom
 Kitchen/Dining Area: 17'2 x 16'2 (5.24m x 4.93m)
 Inner Hallway
 Lounge: 14'6 x 12'1 (4.42m x 3.69m)
 Cloakroom

OUTSIDE

Off Road Parking
 Front & Rear Gardens
 Home Office



Call New Romney - 01797 363745 ■ wardsokent.co.uk

■ Legal advice should be taken to verify fixtures/fittings, planning, alterations and/or lease details
 ■ Through a Homewise Home For Life Plan people aged 60+ can secure this property for up to 59% less, by purchasing a Lifetime Lease.

■ Appliances & services are untested, dimensions are approximate and floor plans are not to scale