



OVER 60?

Secure this property
for up to **59% less!**

Price

£155,000

Leasehold

2x  1x  1x 

**Bank House, Mountfield
Road, New Romney,
Kent, TN28**

Wards
Helping you move forwards



Main features

- Third floor purpose built apartment with far reaching views
- Modern stylish decoration
- Ideal weekend or investment home
- Short walk to both primary and secondary schools
- Many places of interest to visit close by including the miniature railway

Accommodation

THIRD FLOOR

Entrance Hall

Lounge: 11'1 x 8'6 (3.38m x 2.59m)

Kitchen: 11'3 x 6'3 (3.43m x 1.91m)

Bedroom 1: 11'2 x 10'1 (3.41m x 3.08m)

Bedroom 2(Used as Dining Room): 8'1 x 6'5 up to alcove (2.47m x 1.96m)

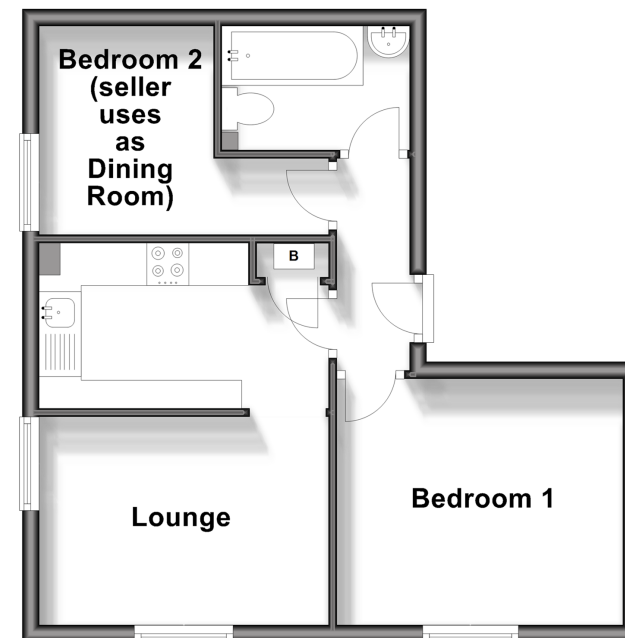
Bathroom

OUTSIDE

Communal Car Park

Third Floor

Approx. 38.5 sq. metres (414.0 sq. feet)



Call New Romney - 01797 363745 ■ wardsokent.co.uk

■ Legal advice should be taken to verify fixtures/fittings, planning, alterations and/or lease details
 ■ Through a Homewise Home For Life Plan people aged 60+ can secure this property for up to 59% less, by purchasing a Lifetime Lease.

■ Appliances & services are untested, dimensions are approximate and floor plans are not to scale