



OVER 60?

Secure this property
for up to **59% less!**

Price

£495,000

Freehold

4x  2x  1x 

**Melbury Mews, New
Romney, Kent, TN28**

Wards
Helping you move forwards



Main features

- **Exceptional modern home in a small mews**
- **Quiet tucked away location**
- **Spacious interior to include family kitchen/breakfast room with separate utility**
- **3 double bedrooms**
- **Short walk to town centre and schools**

Accommodation

GROUND FLOOR

Entrance Hall

Kitchen/Breakfast Room: 12'2 x 9'4 (3.71m x 2.85m) plus 9'8 x 8'8 (2.95m x 2.64m)

Utility: 7'10 x 6'0 (2.39m x 1.83m)

Lounge/Diner: 11'2 x 11'2 (3.41m x 3.41m) plus 10'0 x 11'2 (3.05m x 3.41m)

Cloakroom

FIRST FLOOR

Landing

Bedroom 1: 14'3 x 11'0 (4.35m x 3.36m)

En-Suite Shower Room

Bedroom 2: 10'4 x 9'9 (3.15m x 2.97m)

Bedroom 3: 8'5 x 7'8 (2.57m x 2.34m)

Bedroom 4: 7'2 x 6'6 (2.19m x 1.98m)

Bathroom

OUTSIDE

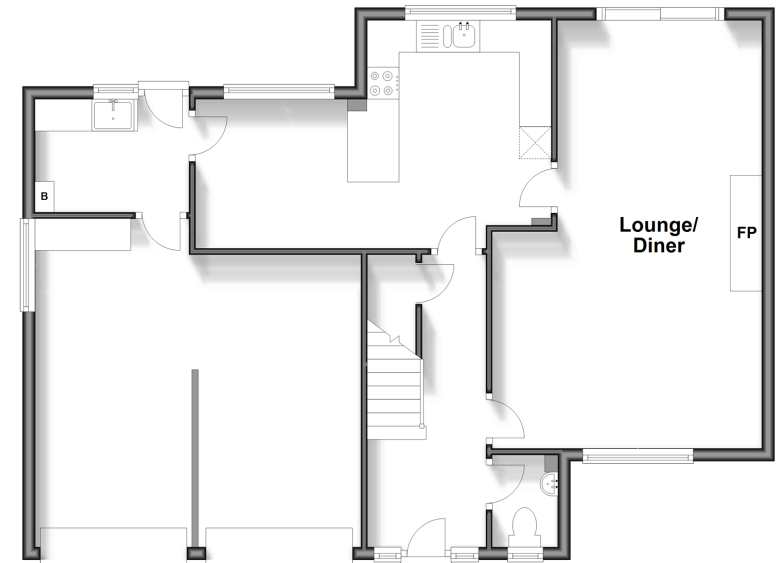
Off Road Parking

Double Garage

Front & Rear Gardens

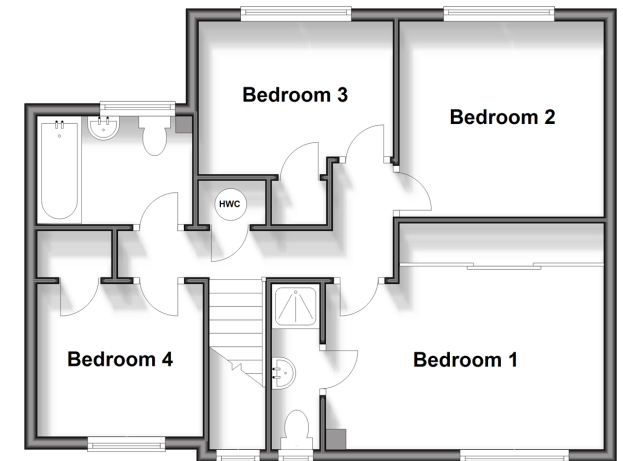
Ground Floor

Approx. 83.0 sq. metres (893.5 sq. feet)



First Floor

Approx. 55.5 sq. metres (597.8 sq. feet)



Call New Romney - 01797 363745 ■ wardsof Kent.co.uk

- Legal advice should be taken to verify fixtures/fittings, planning, alterations and/or lease details
- Appliances & services are untested, dimensions are approximate and floor plans are not to scale
- Through a Homewise Home For Life Plan people aged 60+ can secure this property for up to 59% less, by purchasing a Lifetime Lease.



13525503/20240323/AH/CA