



Price
£330,000

Freehold

3x  2x  1x 

**Old Port Place, Church
Lane, New Romney,
Kent, TN28**

OVER 60?

Secure this property
for up to **59% less!**

Wards
Helping you move forwards



Main features

- Brand new end of terrace home on an exclusive development of just 14 homes
- Rural aspect to the rear and just a short stroll from the town centre
- Wonderfully light and airy
- Low maintenance garden
- Walking distance to the beach

Accommodation

GROUND FLOOR

Entrance Hall

Kitchen/Breakfast Room: 14'9 x 11'10 (4.50m x 3.61m)

Lounge/Diner: 14'9 x 10'6 (4.50m x 3.20m)

Cloakroom

FIRST FLOOR

Landing

Bedroom 2: 14'9 x 10'7 (4.50m x 3.23m)

Bedroom 3: 11'10 x 10'11 (3.61m x 3.33m)

En-Suite Shower Room

SECOND FLOOR

Landing

Bedroom 1: 14'9 x 10'6 (4.50m x 3.20m)

Dressing Room

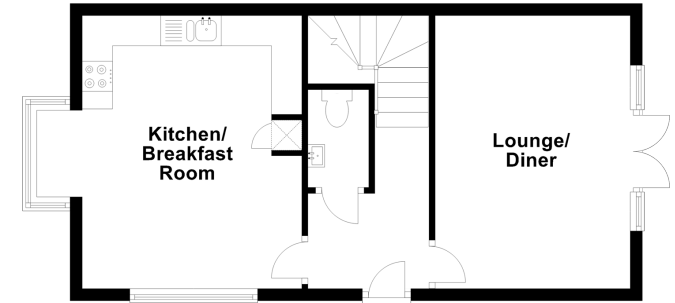
OUTSIDE

Off Road Parking

Rear Garden

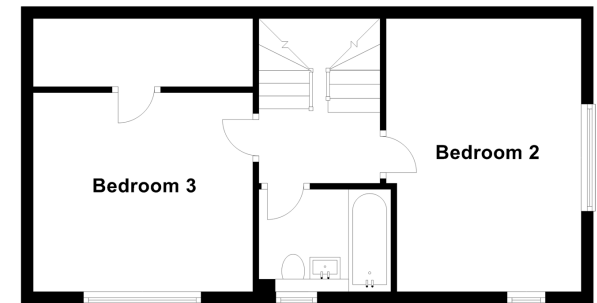
Ground Floor

Approx. 41.4 sq. metres (445.9 sq. feet)



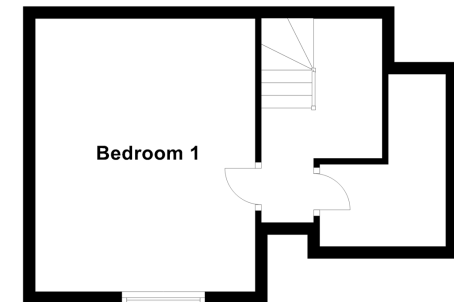
First Floor

Approx. 40.9 sq. metres (440.1 sq. feet)



Second Floor

Approx. 26.8 sq. metres (288.9 sq. feet)



Call New Romney - 01797 363745 ■ wardsof Kent.co.uk

- Legal advice should be taken to verify fixtures/fittings, planning, alterations and/or lease details
- Appliances & services are untested, dimensions are approximate and floor plans are not to scale
- Through a Homewise Home For Life Plan people aged 60+ can secure this property for up to 59% less, by purchasing a Lifetime Lease.



13525527/20240409/AH/SRH