



Price
£335,000

Freehold

3x  1x  1x 

**Old Port Place, New
Romney, Kent, TN28**

Wards
Helping you move forwards



Main features

- Brand new end of terrace home on an development of just 14 houses
- Unique design - the only one of this style on the development
- Handy for the High Street and local amenities
- Garden to rear, high specification
- Walking distance to the beach at Littlestone

Accommodation

GROUND FLOOR

Entrance Hall: 13'2 at widest point x 7'10 at widest point (4.02m x 2.39m)

Cloakroom

Kitchen/Breakfast Room: 17'0 x 10'7 (5.19m x 3.23m)

Lounge/Diner: 17'1 x 14'9 (5.21m x 4.50m)

FIRST FLOOR

Landing/Study Area

Bedroom 1: 12'10 x 10'8 (3.91m x 3.25m)

En-Suite Shower Room

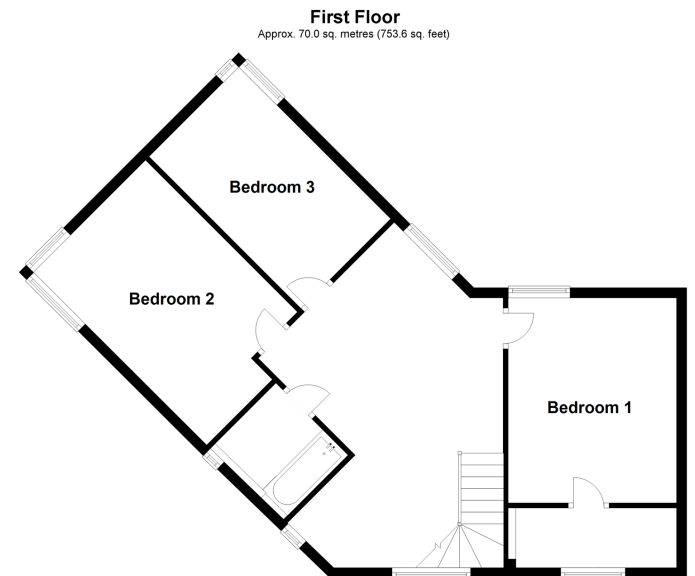
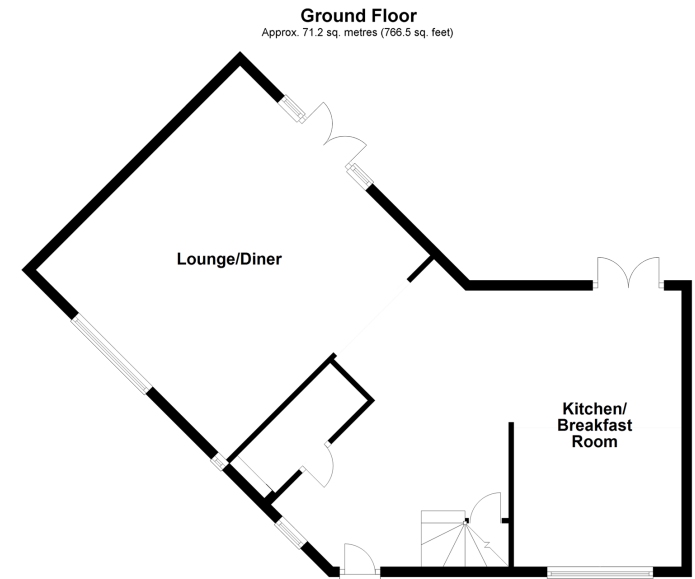
Bedroom 2: 11'4 x 7'6 (3.46m x 2.29m)

Bedroom 3: 14'9 (4.50m) narrowing to 11'3 (3.43m) x 9'2 (2.80m)

OUTSIDE

Off Road Parking

Rear Garden



Call New Romney - 01797 363745 ■ wardsforkent.co.uk

- Legal advice should be taken to verify fixtures/fittings, planning, alterations and/or lease details
- Appliances & services are untested, dimensions are approximate and floor plans are not to scale



13525528/20240308/AH/SRH