



OVER 60?

Secure this property
for up to **59% less!**

Price

£275,000

Freehold

3x  1x  1x 

**Rype Close, Lydd,
Romney Marsh, Kent,
TN29**

Wards
Helping you move forwards



Main features

- Recently updated and improved
- Landscaped rear garden and access to the road through large gates
- Modern kitchen/diner, large lounge with fireplace
- Quiet mews location
- Ideal for shops and schools and local amenities

Accommodation

GROUND FLOOR

Entrance Hall

Lounge: 17'4 x 11'4 (5.29m x 3.46m)

Kitchen/Diner: 17'5 x 7'4 (5.31m x 2.24m)

FIRST FLOOR

Landing

Bedroom 1: 11'2 x 7'8 (3.41m x 2.34m)

Bedroom 2: 11'7 x 11'2 (3.53m x 3.41m)

Bedroom 3: 11'7 x 6'0 (3.53m x 1.83m)

Bathroom

OUTSIDE

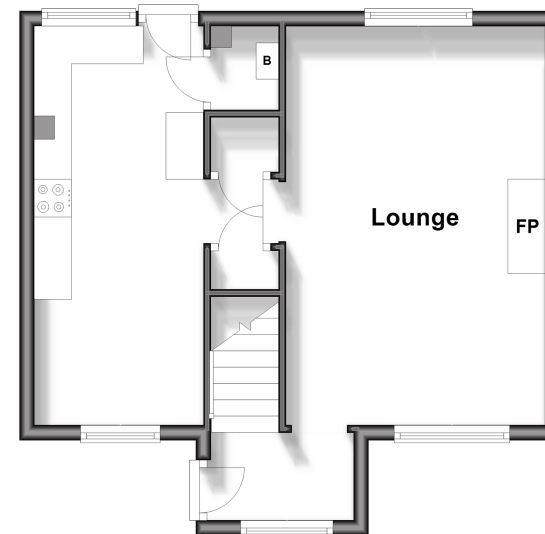
Front & Rear Gardens

Shed

Outbuilding

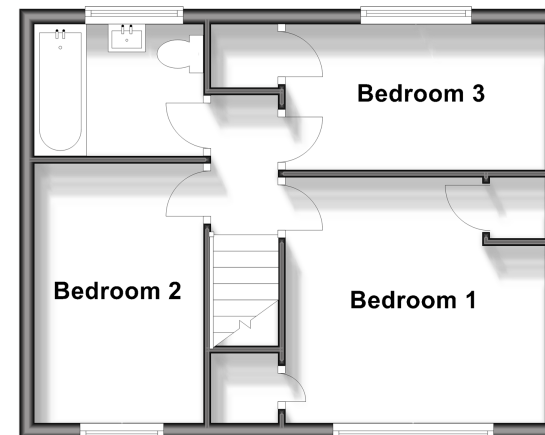
Ground Floor

Approx. 38.7 sq. metres (416.1 sq. feet)



First Floor

Approx. 36.2 sq. metres (390.1 sq. feet)



Call New Romney - 01797 363745 ■ wardsof Kent.co.uk

- Legal advice should be taken to verify fixtures/fittings, planning, alterations and/or lease details
- Appliances & services are untested, dimensions are approximate and floor plans are not to scale
- Through a Homewise Home For Life Plan people aged 60+ can secure this property for up to 59% less, by purchasing a Lifetime Lease.



13525545/20240423/AH/CA