



**Guide Price**  
**£300,000**

**Freehold**

3x  2x  2x 

**Seaway Crescent, St  
Mary's Bay, Romney  
Marsh, Kent, TN29**

**OVER 60?**

Secure this property  
for up to **59% less!**

*Wards*  
Helping you move forwards





## Main features

- Spacious family home with a versatile layout ideal for young and old alike
- Bathroom facilities on both floors
- Driveway for multiple cars
- Short drive to the beach and countryside
- Conservatory to relax in the sun

## Accommodation

### GROUND FLOOR

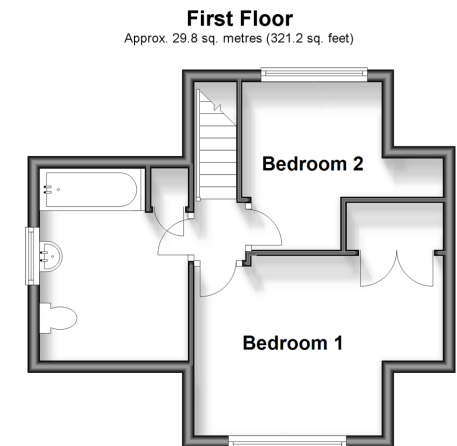
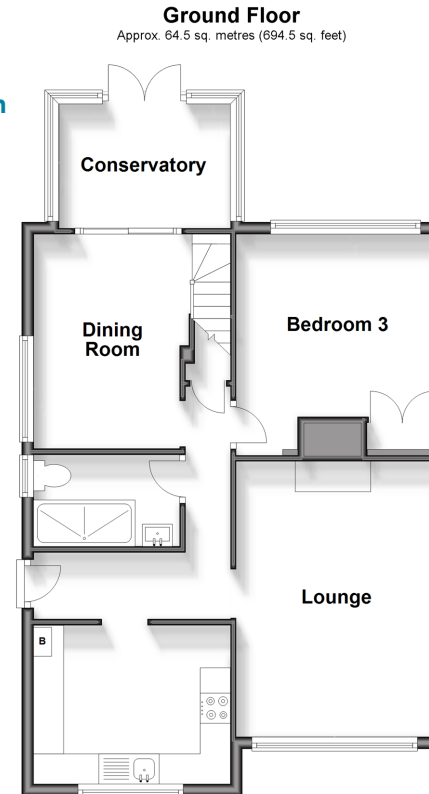
Entrance Hallway  
 Kitchen: 10'7 x 8'7 (3.23m x 2.62m)  
 Lounge: 15'2 x 11'0 (4.63m x 3.36m)  
 Shower Room  
 Bedroom 3: 11'10 x 11'0 (3.61m x 3.36m)  
 Dining Room: 11'6 x 8'0 (3.51m x 2.44m)  
 Conservatory: 10'0 x 7'0 (3.05m x 2.14m)

### FIRST FLOOR

Landing  
 Bathroom  
 Bedroom 1: 10'4 x 9'6 (3.15m x 2.90m) narrowing to 5'5 x 3'3 (1.65m x 0.99m)  
 Bedroom 2: 13'5 x 9'10 (4.09m x 3.00m)

### OUTSIDE

Driveway  
 Front Garden  
 Rear Garden



**Call New Romney - 01797 363745 ■ [wardsof Kent.co.uk](http://wardsof Kent.co.uk)**

- Legal advice should be taken to verify fixtures/fittings, planning, alterations and/or lease details
- Appliances & services are untested, dimensions are approximate and floor plans are not to scale
- Through a Homewise Home For Life Plan people aged 60+ can secure this property for up to 59% less, by purchasing a Lifetime Lease.



13525551/20240509/AH/SRH