



Price
£300,000

Freehold

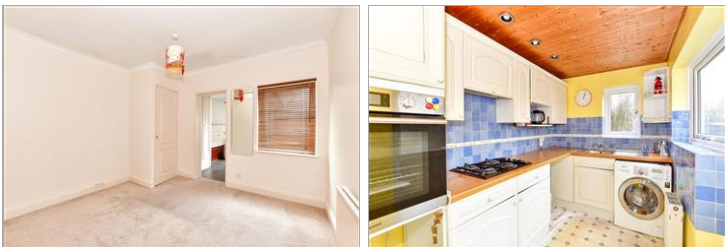
2x  2x  2x 

**Maidstone Road,
Paddock Wood,
Tonbridge, Kent, TN12**

OVER 60?

Secure this property
for up to **59% less!**

Wards
Helping you move forwards



Main features

- **Fantastic property with potential to add value**
- **Conservatory through to spacious rear garden**
- **Central Village location**
- **Close to shops, schools and travel links into London**
- **Offered chain free**

Accommodation

GROUND FLOOR

Entrance Hall

Lounge: 11'5 x 11'4 (3.48m x 3.46m)

Dining Room: 14'9 x 11'6 (4.50m x 3.51m)

Cloakroom

Utility Room: 10'2 x 6'6 (3.10m x 1.98m)

Kitchen: 9'9 x 6'8 (2.97m x 2.03m)

FIRST FLOOR

Landing

Bedroom 1: 11'5 x 11'4 (3.48m x 3.46m)

Bedroom 2: 11'5 x 11'4 (3.48m x 3.46m)

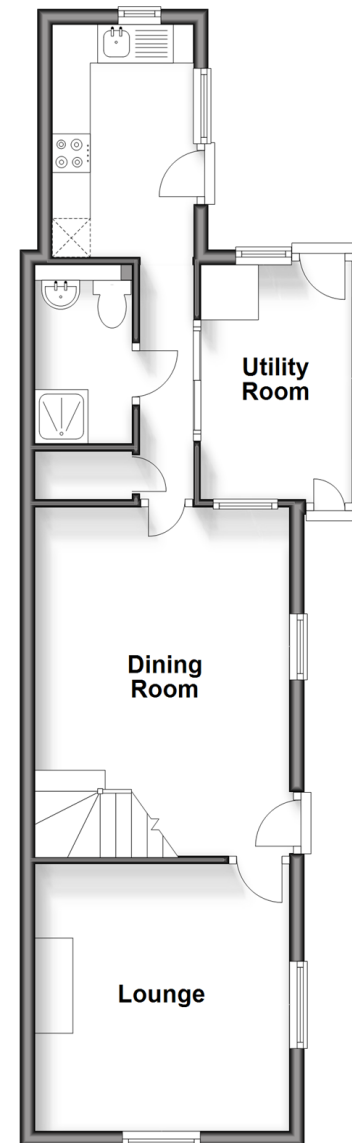
En suite Bedroom 2

OUTSIDE

Garden

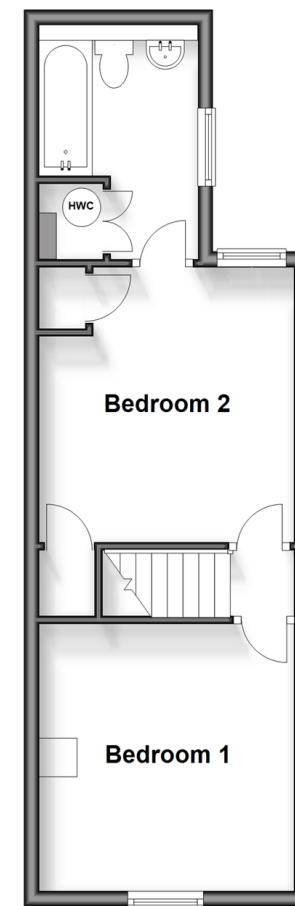
Ground Floor

Approx. 46.1 sq. metres (496.3 sq. feet)



First Floor

Approx. 33.8 sq. metres (363.7 sq. feet)



Call Paddock Wood - 01892 836877 ■ wardsof Kent.co.uk

- Legal advice should be taken to verify fixtures/fittings, planning, alterations and/or lease details
- Appliances & services are untested, dimensions are approximate and floor plans are not to scale
- Through a Homewise Home For Life Plan people aged 60+ can secure this property for up to 59% less, by purchasing a Lifetime Lease.