



Price
£425,000

Freehold

3x  1x  2x 

**Warrington Road,
Paddock Wood,
Tonbridge, Kent, TN12**

Wards
Helping you move forwards



Main features

- Semi detached property in sought after location
- Close to local amenities and schools
- Off road parking and car port
- Extended kitchen and dining room
- French doors to garden
- Chain free

Accommodation

GROUND FLOOR

Entrance Hall

Lounge: 20'0 x 10'2 (6.10m x 3.10m)

Kitchen/Breakfast Room: 20'0 x 9'1 (6.10m x 2.77m)

Dining Room: 18'2 x 13'1 (5.54m x 3.99m)

FIRST FLOOR

Landing

Bedroom 1: 11'10 x 11'10 (3.61m x 3.61m)

Bedroom 2: 10'2 x 9'2 (3.10m x 2.80m)

Bedroom 3: 8'11 x 7'5 (2.72m x 2.26m)

Bathroom: 5'9 x 5'6 (1.75m x 1.68m)

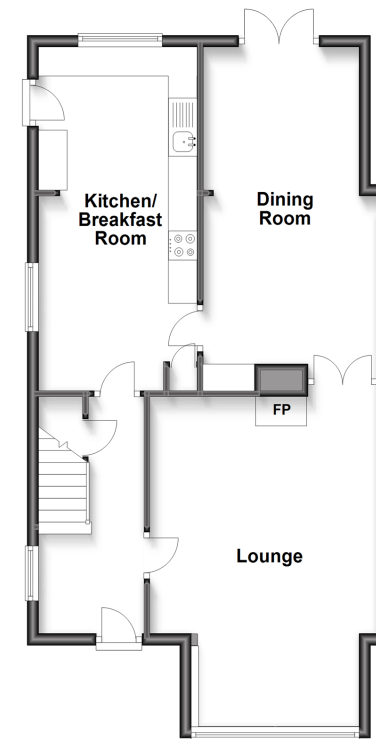
OUTSIDE

Rear Garden

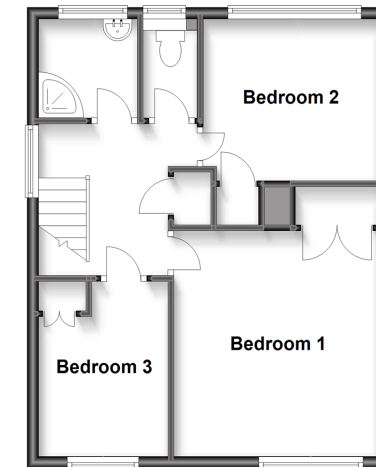
Off Road Parking

Car Port

Ground Floor
Approx. 63.5 sq. metres (683.3 sq. feet)



First Floor
Approx. 44.5 sq. metres (478.6 sq. feet)



Call Paddock Wood - 01892 836877 ■ wardsforkent.co.uk

- Legal advice should be taken to verify fixtures/fittings, planning, alterations and/or lease details
- Appliances & services are untested, dimensions are approximate and floor plans are not to scale



13622562/20221214/LF/GW