



**OVER 60?**

Secure this property  
for up to **59% less!**

**Price**

**£350,000**

**Freehold**

2x  1x  2x 

**Lughorse Lane, Yalding,  
Maidstone, Kent, ME18**

*Wards*  
Helping you move forwards





## Main features

- Charming cottage with allocated parking for 2 and pretty garden
- Stylish living space with cosy lounge and stunning bright dining area
- Country style kitchen
- Good size main bedroom with guest/ second double
- Edge of village with access to village amenities and open countryside

## Accommodation

### GROUND FLOOR

Entrance Hall

Dining Area: 15'2 x 9'3 (4.63m x 2.82m)

Lounge: 13'2 x 8'9 (4.02m x 2.67m)

Kitchen: 12'1 x 8'4 (3.69m x 2.54m)  
narrowing to 10'1 x 6'10 (3.08m x 2.08m)

### FIRST FLOOR

Landing

Bedroom 1: 13'11 x 9'4 (4.24m x 2.85m)

Bedroom 2: 9'7 x 9'0 (2.92m x 2.75m)

Bathroom: 9'10 (3.00m) x 9'1 (2.77m)  
narrowing to 7'3 (2.21m)

### OUTSIDE

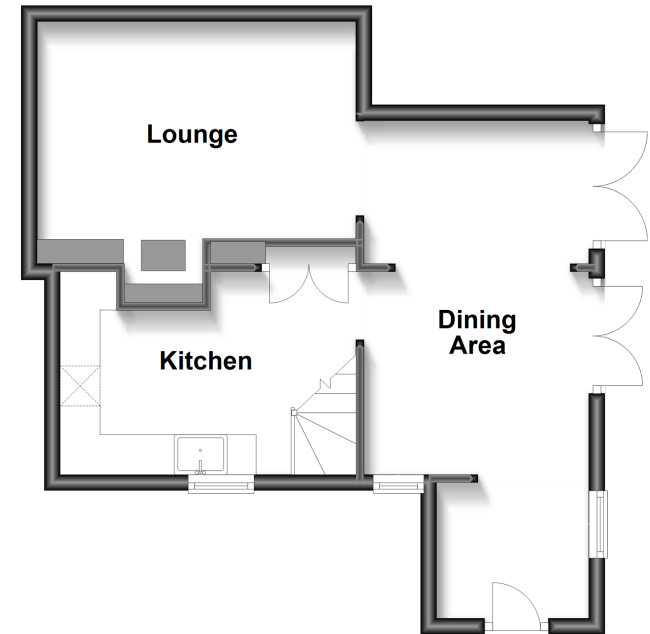
Allocated parking x 2

Garden

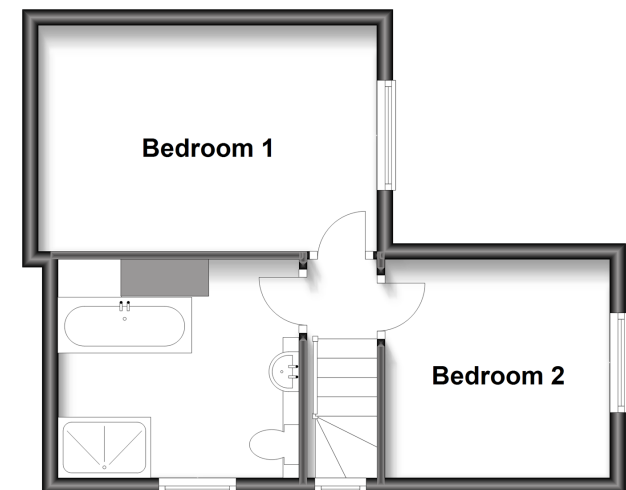
Shed as Office

Shed as Utility

**Ground Floor**  
Approx. 38.4 sq. metres (413.3 sq. feet)



**First Floor**  
Approx. 31.7 sq. metres (341.1 sq. feet)



**Call Paddock Wood - 01892 836877 ■ [wardsof Kent.co.uk](http://wardsof Kent.co.uk)**

- Legal advice should be taken to verify fixtures/fittings, planning, alterations and/or lease details
- Appliances & services are untested, dimensions are approximate and floor plans are not to scale
- Through a Homewise Home For Life Plan people aged 60+ can secure this property for up to 59% less, by purchasing a Lifetime Lease.



13624199/20230713/JT/GW