



Price
£375,000

Freehold

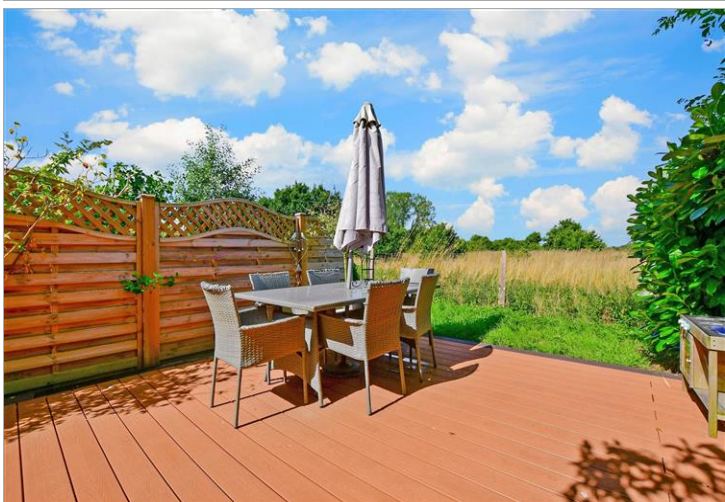
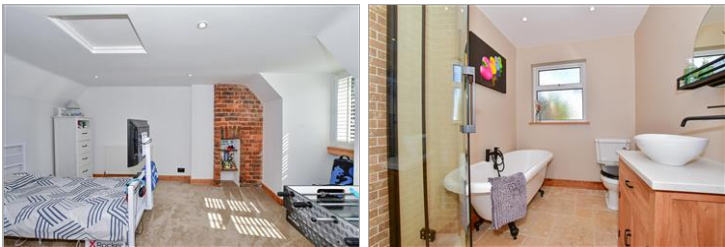
3x  1x  2x 

**Tonbridge Road, East
Peckham, Tonbridge,
Kent, TN12**

OVER 60?

Secure this property
for up to **59% less!**

Wards
Helping you move forwards



Main features

- Stylish modernised cottage in delightful setting with glorious views
- Stunning 'heart of the home' kitchen/dining room
- Lounge with stove
- Super stylish bathroom with roll top bath and separate shower
- Parking for 3 plus cars

Accommodation

GROUND FLOOR

Entrance Hall
 Lounge: 12'10 x 12'2 (3.91m x 3.71m)
 Dining Area: 13'1 x 11'6 (3.99m x 3.51m)
 Kitchen: 16'0 x 7'0 maximum (4.88m x 2.14m)

FIRST FLOOR

Landing
 Bedroom 1: 12'10 x 12'2 (3.91m x 3.71m)
 Bedroom 3: 11'6 x 7'3 (3.51m x 2.21m)

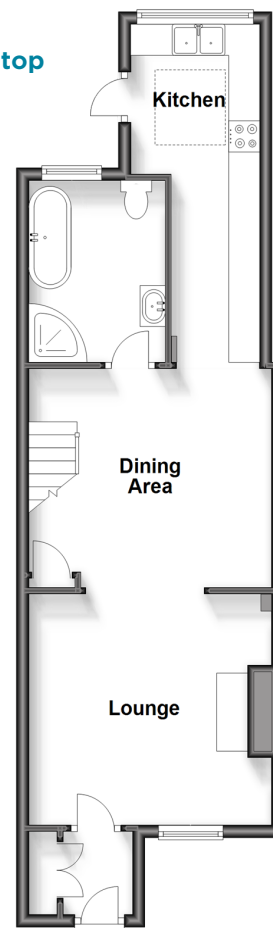
SECOND FLOOR

Bedroom 2: 15'9 x 12'10 (4.80m x 3.91m)

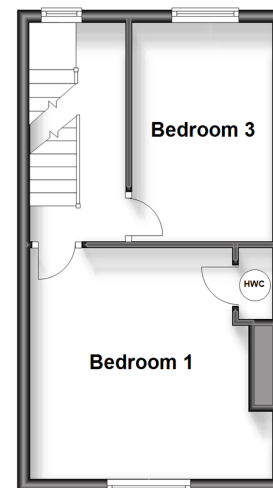
OUTSIDE

Driveway
 Additional Parking
 Rear Garden

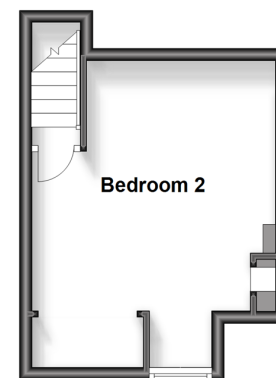
Ground Floor
 Approx. 47.5 sq. metres (511.1 sq. feet)



First Floor
 Approx. 28.7 sq. metres (308.5 sq. feet)



Second Floor
 Approx. 18.8 sq. metres (202.2 sq. feet)



Call Paddock Wood - 01892 836877 ■ wardsofkent.co.uk

- If buying to let, the energy rating will need to be improved to at least 'E' rating before you can let the property
- Legal advice should be taken to verify fixtures/fittings, planning, alterations and/or lease details
- Appliances & services are untested, dimensions are approximate and floor plans are not to scale
- Through a Homewise Home For Life Plan people aged 60+ can secure this property for up to 59% less, by purchasing a Lifetime Lease.

