

OVER 60?

Secure this property
for up to **59% less!**



Price

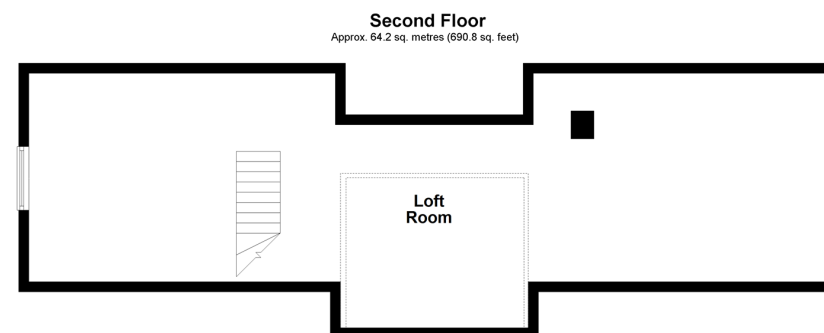
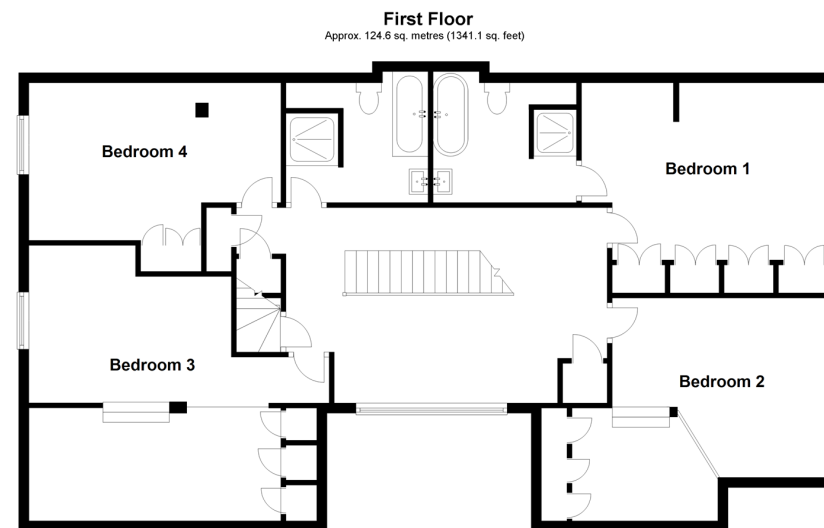
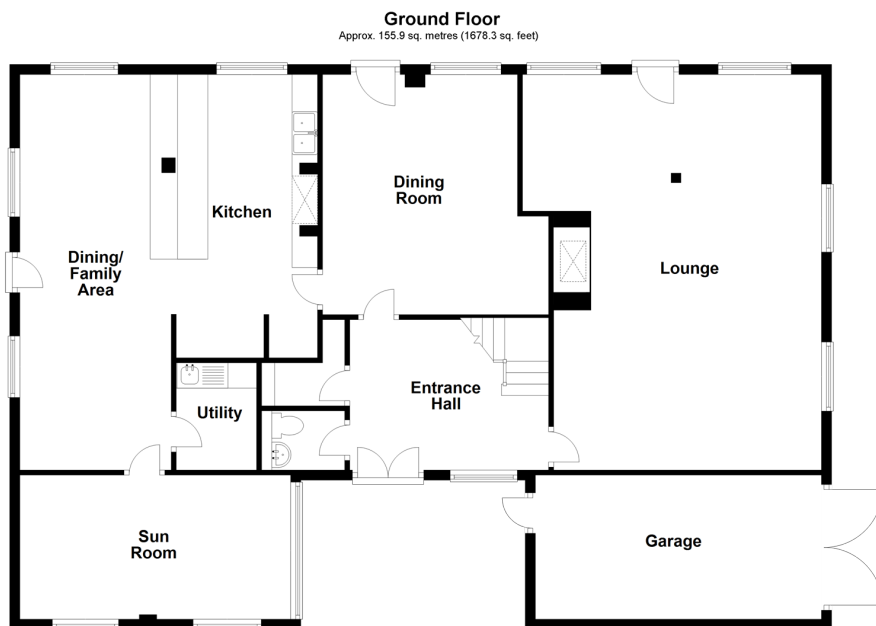
£720,000

Freehold

4x  3x  4x 

Benover Road, Collier Street, Tonbridge,
Kent, TN12

Wards
Helping you move forwards



Accommodation

GROUND FLOOR

Galleried Entrance Hall

Lounge: 25'4 (7.73m) x 19'6 (5.95m) narrowing to 15'0 (4.58m)

Kitchen/Dining/Family Area: 25'7 (7.80m) narrowing to 15'2 (4.63m) x 19'1 (5.82m)

Dining Room: 15'4 (4.68m) x 14'0 (4.27m) narrowing to 12'0 (3.66m)

Sun Room: 17'0 x 9'4 (5.19m x 2.85m)

Utility : 6'8 x 5'4 (2.03m x 1.63m)

Cloakroom

FIRST FLOOR

Landing

Bedroom 1: 16'0 x 11'6 (4.88m x 3.51m)

En suite Bedroom 1: 9'2 (2.80m) narrowing to 6'4 (1.93m) x 7'10 (2.39m)

Bedroom 2: 16'8 (5.08m) narrowing to 14'1 (4.30m) x 11'4 (3.46m)

Bedroom 3: 15'7 (4.75m) x 10'7 (3.23m) narrowing to 8'0 (2.44m)

Bedroom 4: 16'0 (4.88m) x 13'1 (3.99m) narrowing to 10'2 (3.10m)

Bathroom: 9'1 (2.77m) narrowing to 6'3 (1.91m) x 7'10 (2.39m)

SECOND FLOOR

Loft Rooms: 51'7 x 13'6 (15.73m x 4.12m)

OUTSIDE

Garage: 18'5 x 9'9 (5.62m x 2.97m)

Driveway

Front, Side & Rear Gardens



Main features

- Beautiful Thatched Grade II Listed barn
- Stunning wrap-around gardens with well stocked fish pond and small stream
- 3 large reception rooms plus additional sun room/home office
- All 4 double bedrooms including main bedroom with en-suite plus huge attic rooms
- Nearby walks into stunning countryside, river walks & the Green Sand Way



Nearest Schools

Primary: St Margaret's, Collier Street 0.8 miles, Laddingford and Yalding nearby. Secondary: Mascalls School 3.2 miles, Grammars at Maidstone, Tonbridge and Tunbridge Wells. Private Schools at Pembury, Tonbridge, Sevenoaks, Tunbridge Wells and Sutton Valence



Transport Information

Train Stations: Beltring 1.9 miles, Yalding 2.1 miles, Paddock Wood 2.6 miles



Address

Benover Road, Collier Street, Tonbridge, Kent, TN12



Directions

For directions to this property please contact us.



Wards
Helping you move forwards

Call Paddock Wood Branch 01892 836877 ■ wardsofkent.co.uk



■ If buying to let, the energy rating will need to be improved to at least 'E' rating before you can let the property
■ Appliances & services are untested, dimensions are approximate and floor plans are not to scale

■ Legal advice should be taken to verify fixtures/fittings, planning, alterations and/or lease details
■ Through a Homewise Home For Life Plan people aged 60+ can secure this property for up to 59% less, by purchasing a Lifetime Lease.

13626639/20230909/GD/GW